

SARS S-protein Rabbit pAb

Catalog Number: bs-0130R

Target Protein: SARS S-protein

Concentration: 1mg/ml

Form: Liquid

Host: Rabbit

Clonality: Polyclonal

Isotype: IgG

Applications: WB (1:500-2000)

Reactivity: Rat (predicted:SARS-CoV)

Predicted MW: 139 kDa

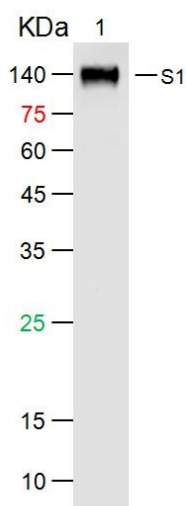
Source: KLH conjugated synthetic peptide derived from SARS S-protein: 401-500/1255.

Purification: affinity purified by Protein A

Storage: 0.01M TBS (pH7.4) with 1% BSA, 0.02% Proclin300 and 50% Glycerol.

Shipped at 4°C. Store at -20°C for one year. Avoid repeated freeze/thaw cycles.

VALIDATION IMAGES



Sample: Lane 1: SARS-CoV Spike S1 Protein at 500ng Primary: Rabbit Anti-SARS S Protein Antibody at 1/1000 dilution Secondary: IRDye800CW Goat Anti-Rabbit IgG at 1/20000 dilution Predicted band size: 76.6kD
Observed band size: kD