

bs-0689R**[Primary Antibody]****Bioss**
ANTIBODIES

www.bioss.com.cn

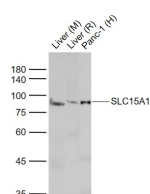
sales@bioss.com.cn

techsupport@bioss.com.cn

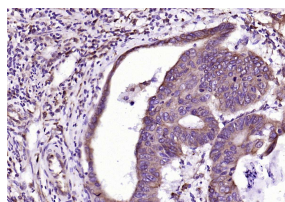
400-901-9800

PEPT1 Rabbit pAb**— DATASHEET —**

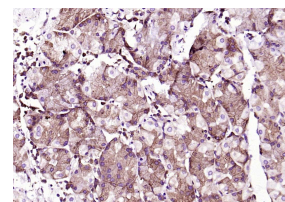
Host: Rabbit	Isotype: IgG	Applications: WB (1:500-1000)
Clonality: Polyclonal		IHC-P (1:50-200)
GeneID: 6564	SWISS: P46059	IHC-F (1:400-800)
Target: PEPT1		IF (1:100-500)
Immunogen: KLH conjugated synthetic peptide derived from human PEPT1: 101-200/714(chk). < Cytoplasmic >		Reactivity: Human, Mouse, Rat
Purification: affinity purified by Protein A		
Concentration: 1mg/ml		Predicted MW.: 79 kDa
Storage: 0.01M TBS (pH7.4) with 1% BSA, 0.02% Proclin300 and 50% Glycerol. Shipped at 4°C. Store at -20°C for one year. Avoid repeated freeze/thaw cycles.		Subcellular Location: Cell membrane
Background: PEPT1(Oligopeptide transporter, small intestine isoform (Peptide transporter 1) (Intestinal H+)/peptide cotransporter) (Solute carrier family 15 member 1) Proton-coupled intake of oligopeptides of 2 to 4 amino acids with a preference for dipeptides. May constitute a major route for the absorption of protein digestion end-products. Subcellular Location: membrane; Multi-pass membrane protein. Tissue Specificity Intestine, kidney, liver and low in brain. Belongs to the PTR2/POT transporter (TC 2.A.17) family.		

— VALIDATION IMAGES —

Sample: Lane 1: Liver (Mouse) Lysate at 40 ug
Lane 2: Liver (Rat) Lysate at 40 ug Lane 3: Panc-1 (Human) Cell Lysate at 30 ug
Primary: Anti-SLC15A1 (bs-0689R) at 1/1000 dilution
Secondary: IRDye800CW Goat Anti-Rabbit IgG at 1/20000 dilution
Predicted band size: 80 kD
Observed band size: 83 kD



Paraformaldehyde-fixed, paraffin embedded Human Colon Cancer; Antigen retrieval by boiling in sodium citrate buffer (pH6.0) for 15 min; Antibody incubation with PEPT1 Polyclonal Antibody, Unconjugated (bs-0689R) at 1:200 overnight at 4°C, followed by conjugation to the SP Kit (Rabbit, SP-0023) and DAB (C-0010) staining.



Paraformaldehyde-fixed, paraffin embedded Human Gastric Cancer; Antigen retrieval by boiling in sodium citrate buffer (pH6.0) for 15 min; Antibody incubation with PEPT1 Polyclonal Antibody, Unconjugated (bs-0689R) at 1:200 overnight at 4°C, followed by conjugation to the SP Kit (Rabbit, SP-0023) and DAB (C-0010) staining.

— SELECTED CITATIONS —

- **[IF=10.317]** Yaxian Zheng. et al. Tailored elasticity combined with biomimetic surface promotes nanoparticle transcytosis to overcome mucosal epithelial barrier. Biomaterials. 2020 Dec;262:120323 IF ;Human. 32896816
- **[IF=7.514]** Yi Wu. et al. Selective transportation and energy homeostasis regulation of dietary advanced glycation end-products in human intestinal Caco-2 cells. FOOD CHEM. 2022 Oct;391:133284 FCM ;Human. 35640343
- **[IF=6.383]** Yang Wen. et al. Different copper sources and levels affect growth performance, copper content, carcass characteristics, intestinal microorganism and metabolism of finishing pigs. Anim Nutr. 2021 Nov;; WB ;Pig. 10.1016/j.aninu.2021.10.007
- **[IF=3.73]** Xu, Qingbiao, et al. "Establishment and Characterization of an Omasal Epithelial Cell Model Derived from

Important Note: This product as supplied is intended for research use only, not for use in human, therapeutic or diagnostic applications.

Dairy Calves for the Study of Small Peptide Absorption." PLOS ONE 9.3 (2014): e88993. Other ;="Bovine". 24633419

- **[IF=3.357]** Morita M et al. Fluorescence - based discrimination of breast cancer cells by direct exposure to 5 - aminolevulinic acid. Cancer Med. 2019 Aug 5. WB ;Human. 31385432