

bs-1084R**[Primary Antibody]****PEG10 Rabbit pAb****BioSS**
ANTIBODIES

www.bioss.com.cn

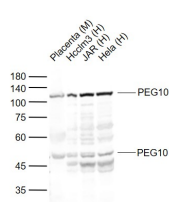
sales@bioss.com.cn

techsupport@bioss.com.cn

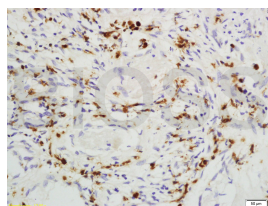
400-901-9800

— DATASHEET —**Host:** Rabbit**Isotype:** IgG**Clonality:** Polyclonal**GeneID:** 23089**SWISS:** Q86TG7**Target:** PEG10**Immunogen:** KLH conjugated synthetic peptide derived from human PEG10: 301-400/708.**Purification:** affinity purified by Protein A**Concentration:** 1mg/ml**Storage:** 0.01M TBS (pH7.4) with 1% BSA, 0.02% Proclin300 and 50% Glycerol.

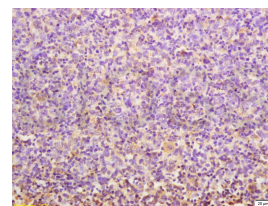
Shipped at 4°C. Store at -20°C for one year. Avoid repeated freeze/thaw cycles.

Background: This is a paternally expressed imprinted gene that encodes transcripts containing two overlapping open reading frames (ORFs), RF1 and RF1/RF2, as well as retroviral-like slippage and pseudoknot elements, which can induce a -1 nucleotide frame-shift. ORF1 encodes a shorter isoform with a CCHC-type zinc finger motif containing a sequence characteristic of gag proteins of most retroviruses and some retrotransposons. The longer isoform is the result of -1 translational frame-shifting leading to translation of a gag/pol-like protein combining RF1 and RF2. It contains the active-site consensus sequence of the protease domain of pol proteins. Additional isoforms resulting from alternatively spliced transcript variants, as well as from use of upstream non-AUG (CUG) start codon, have been reported for this gene. Increased expression of this gene is associated with hepatocellular carcinomas. [provided by RefSeq, May 2010].**Applications:** **WB** (1:500-2000)**IHC-P** (1:100-500)**IHC-F** (1:100-500)**IF** (1:100-500)**Reactivity:** Human, Mouse
(predicted: Rat, Pig, Cow, Dog)**Predicted MW.:** 78 kDa**Subcellular Location:** Cytoplasm ,Nucleus**— VALIDATION IMAGES —**

Sample: Lane 1: Mouse Placenta tissue lysates
 Lane 2: Human Hcclm3 cell lysates Lane 3:
 Human JAR cell lysates Lane 4: Human Hela cell
 lysates Primary: Anti-PEG10 (bs-1084R) at 1/1000
 dilution Secondary: IRDye800CW Goat Anti-
 Rabbit IgG at 1/20000 dilution Predicted band
 size: 78 kD Observed band size: 110,48 kD



Tissue/cell: human rectal carcinoma; 4%
 Paraformaldehyde-fixed and paraffin-
 embedded; Antigen retrieval: citrate buffer (0.01M, pH 6.0), Boiling bathing for 15min; Block
 endogenous peroxidase by 3% Hydrogen
 peroxide for 30min; Blocking buffer (normal goat
 serum,C-0005) at 37°C for 20 min; Incubation:
 Anti-PEG10 Polyclonal Antibody,
 Unconjugated(bs-1084R) 1:200, overnight at 4°C,
 followed by conjugation to the secondary
 antibody(SP-0023) and DAB(C-0010) staining



Tissue/cell: mouse cancer tissue; 4%
 Paraformaldehyde-fixed and paraffin-
 embedded; Antigen retrieval: citrate buffer (0.01M, pH 6.0), Boiling bathing for 15min; Block
 endogenous peroxidase by 3% Hydrogen
 peroxide for 30min; Blocking buffer (normal goat
 serum,C-0005) at 37°C for 20 min; Incubation:
 Anti-PEG10 Polyclonal Antibody,
 Unconjugated(bs-1084R) 1:200, overnight at 4°C,
 followed by conjugation to the secondary
 antibody(SP-0023) and DAB(C-0010) staining