

PRL Rabbit pAb

Catalog Number: bs-0508R

Target Protein: PRL

Concentration: 1mg/ml

Form: Liquid

Host: Rabbit

Clonality: Polyclonal

Isotype: IgG

Applications: WB (1:500-2000), IHC-P (1:100-500), IHC-F (1:100-500), IF (1:100-500)

Reactivity: Human

Predicted MW: 24 kDa

Entrez Gene: 5617

Swiss Prot: P01236

Source: KLH conjugated synthetic peptide derived from human PRL: 165-227/227.

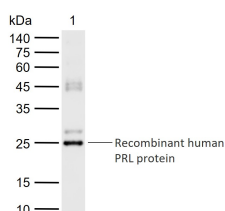
Purification: affinity purified by Protein A

Storage: 0.01M TBS (pH7.4) with 1% BSA, 0.02% Proclin300 and 50% Glycerol.

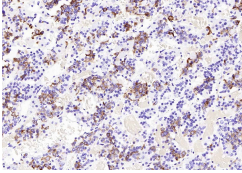
Shipped at 4°C. Store at -20°C for one year. Avoid repeated freeze/thaw cycles.

Background: This gene encodes the anterior pituitary hormone prolactin. This secreted hormone is a growth regulator for many tissues, including cells of the immune system. It may also play a role in cell survival by suppressing apoptosis, and it is essential for lactation. Alternative splicing results in multiple transcript variants that encode the same protein. [provided by RefSeq, Aug 2011].

VALIDATION IMAGES



Sample: Lane 1: Recombinant human PRL protein, N-His (HEK293)(bs-43099P) Primary: Anti-PRL (bs-0508R) at 1/1000 dilution Secondary: IRDye800CW Goat Anti-Rabbit IgG at 1/20000 dilution Predicted band size: 24 kDa Observed band size: 25 kDa



Paraformaldehyde-fixed, paraffin embedded (human pituitary); Antigen retrieval by boiling in sodium citrate buffer (pH6.0) for 15min; Block endogenous peroxidase by 3% hydrogen peroxide for 20 minutes; Blocking buffer (normal goat serum) at 37°C for 30min; Antibody incubation with (PRL) Polyclonal Antibody, Unconjugated (bs-0508R) at 1:300 overnight at 4°C, followed by operating according to SP Kit(Rabbit) (sp-0023) instructions and DAB staining.

PRODUCT SPECIFIC PUBLICATIONS

[IF=3.32] Hu, Bin, et al. "IFN γ Inhibits Osteopontin Expression in Human Decidual Stromal Cells and can be Attenuated by 1 α , 25 $\text{Dihydroxyvitamin D}_3$." *Journal of Reproductive Immunology* 68.4 (2012): 353-361. **Other ; = "Human"** . 22784028

[IF=2.425] Xie W et al. Seasonal expressions of prolactin, prolactin receptor and STAT5 in the scented glands of the male muskrats (*Ondatra zibethicus*). *Eur J Histochem*. 2019 Jan 17;63(1). **IHC ; muskrat** . 30652434

[IF=1.785] An J et al. A clinical and basic study of optimal endometrial preparation protocols for patients with infertility undergoing frozen-thawed embryo transfer. *Exp Ther Med* . 2020 Sep;20(3):2191-2199. **WB ; Human** . 32765695

[IF=1.785] Junxia An. et al. A clinical and basic study of optimal endometrial preparation protocols for patients with infertility undergoing frozen-thawed embryo transfer. *Exp Ther Med*. 2020 Sep;20(3):2191-2199 **WB ; Human** . 32765695

[IF=2] Qingjing Gao. et al. Seasonal patterns of prolactin, prolactin receptor, and STAT5 expression in the ovaries of wild ground squirrels (*Citellus dauricus* Brandt). *EUR J HISTOCHEM*. 2023 Oct 2; 67(4): 3825 **IHC ; Squirrel** . 37781865