

**bs-0519R****[ Primary Antibody ]****Bioss**  
ANTIBODIES

www.bioss.com.cn

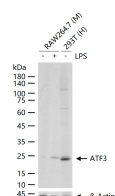
sales@bioss.com.cn

techsupport@bioss.com.cn

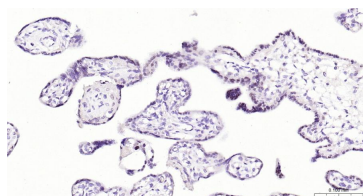
400-901-9800

**ATF3 Rabbit pAb****— DATASHEET —**

<b>Host:</b> Rabbit <b>Clonality:</b> Polyclonal <b>GeneID:</b> 467 <b>Target:</b> ATF3 <b>Immunogen:</b> KLH conjugated synthetic peptide derived from human ATF3: 51-150/181. <b>Purification:</b> affinity purified by Protein A <b>Concentration:</b> 1mg/ml <b>Storage:</b> 0.01M TBS (pH7.4) with 1% BSA, 0.02% Proclin300 and 50% Glycerol. Shipped at 4°C. Store at -20°C for one year. Avoid repeated freeze/thaw cycles. <b>Background:</b> This gene encodes a member of the mammalian activation transcription factor/cAMP responsive element-binding (CREB) protein family of transcription factors. This gene is induced by a variety of signals, including many of those encountered by cancer cells, and is involved in the complex process of cellular stress response. Multiple transcript variants encoding different isoforms have been found for this gene. It is possible that alternative splicing of this gene may be physiologically important in the regulation of target genes. [provided by RefSeq, Apr 2011].	<b>Isotype:</b> IgG <b>SWISS:</b> P18847 <b>Applications:</b> <b>WB</b> (1:500-2000) <b>IHC-P</b> (1:100-500) <b>IHC-F</b> (1:100-500) <b>IF</b> (1:100-500) <b>Reactivity:</b> Human, Mouse  <b>Predicted MW.:</b> 20 kDa <b>Subcellular Location:</b> Nucleus
---	--

**— VALIDATION IMAGES —**

RAW264.7 (M) cells were treated with or without LPS (1ug/ml) for 2 h, 25 µg total protein per lane of cell lysates (see on figure) probed with ATF3 polyclonal antibody, unconjugated (bs-0519R) at 1:1000 dilution and 4°C overnight incubation. Followed by conjugated secondary antibody incubation at r.t. for 60 min.



Paraformaldehyde-fixed, paraffin embedded Human Placenta; Antigen retrieval by boiling in sodium citrate buffer (pH6.0) for 15 min; The section was incubated with ATF3 Polyclonal Antibody, Unconjugated (bs-0519R) at 1:200 overnight at 4°C, followed by conjugation to the bs-0295G-HRP and DAB (C-0010) staining.

**— SELECTED CITATIONS —**

- **[IF=12.38]** Smith, Carolyne K., et al. "Lupus high-density lipoprotein induces proinflammatory responses in macrophages by binding lectin-like oxidised low-density lipoprotein receptor 1 and failing to promote activating transcription factor 3 activity." *Annals of the Rheumatic Diseases* (2016): annrheumdis-2016. FCM ;="Human". 27543414
- **[IF=9.756]** Ramona Palombo. et al. Inhibition of the PI3K/AKT/mTOR signaling promotes an M1 macrophage switch by repressing the ATF3-CXCL8 axis in Ewing sarcoma. *CANCER LETT.* 2023 Feb;555:216042 ChIP ;Human. 36565919
- **[IF=8.724]** Yong Tang. et al. Phosphorylation inhibition of protein-tyrosine phosphatase 1B tyrosine-152 induces bone regeneration coupled with angiogenesis for bone tissue engineering. *Bioact Mater.* 2021 Jul;6:2039 WB ;Mouse. 33511306

Important Note: This product as supplied is intended for research use only, not for use in human, therapeutic or diagnostic applications.

- **[IF=7.1]** Lei Wang. et al. Adipose-derived stem cells attenuate rheumatoid arthritis by restoring CX3CR1+ synovial lining macrophage barrier. stem cell research & therapy. 2025 Mar 5;16(1):111. IF ;Mouse. 40038808
- **[IF=4.77]** Aguirre, Alina, et al. "Defective autophagy impairs ATF3 activity and worsens lung injury during endotoxemia." Journal of Molecular Medicine (2014): 1-12. IHC ;="Mouse". 24535031