

bs-4440R

[Primary Antibody]

BioSS
ANTIBODIES

www.bioss.com.cn

sales@bioss.com.cn

techsupport@bioss.com.cn

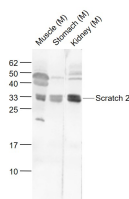
400-901-9800

Scratch 2 Rabbit pAb

— DATASHEET —

Host: Rabbit	Isotype: IgG	Applications: WB (1:500-2000) Reactivity: Mouse (predicted: Human) Predicted MW.: 33 kDa Subcellular Location: Nucleus
Clonality: Polyclonal		
GeneID: 85508	SWISS: Q9NQ03	
Target: Scratch 2		
Immunogen: KLH conjugated synthetic peptide derived from human Scratch 2: 1-100/307.		
Purification: affinity purified by Protein A		
Concentration: 1mg/ml		
Storage: Preservative: 0.02% Proclin300, Constituents: 1% BSA, 0.01M PBS, pH7.4. Shipped at 4°C. Store at -20°C for one year. Avoid repeated freeze/thaw cycles.		
Background: Scratch 2 belongs to the snail C2H2-type zinc-finger protein family. It contains 5 C2H2-type zinc fingers and may be involved in transcriptional regulation.		

— VALIDATION IMAGES —



Sample: Muscle (Mouse) Lysate at 40 ug
Stomach (Mouse) Lysate at 40 ug Kidney (Mouse)
Lysate at 40 ug Primary: Anti-Scratch 2
(bs-4440R) at 1/1000 dilution Secondary:
IRDye800CW Goat Anti-Rabbit IgG at 1/20000
dilution Predicted band size: 33 kD Observed
band size: 33 kD