

bs-18975R**[Primary Antibody]****Myozenin 2 Rabbit pAb****BioSS**
ANTIBODIES

www.bioss.com.cn

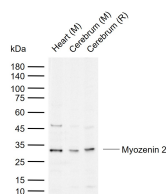
sales@bioss.com.cn

techsupport@bioss.com.cn

400-901-9800

— DATASHEET —

Host: Rabbit	Isotype: IgG	Applications: WB (1:500-2000)
Clonality: Polyclonal		Reactivity: Mouse, Rat (predicted: Human, Rabbit, Pig, Sheep, Cow, Dog, Horse)
GeneID: 51778	SWISS: Q9NPC6	Predicted MW.: 30 kDa
Target: Myozenin 2		Subcellular Location: Cytoplasm
Immunogen: KLH conjugated synthetic peptide derived from human Myozenin 2: 1-100/264.		
Purification: affinity purified by Protein A		
Concentration: 1mg/ml		
Storage: 0.01M TBS (pH7.4) with 1% BSA, 0.02% Proclin300 and 50% Glycerol. Shipped at 4°C. Store at -20°C for one year. Avoid repeated freeze/thaw cycles.		
Background: The protein encoded by this gene belongs to a family of sarcomeric proteins that bind to calcineurin, a phosphatase involved in calcium-dependent signal transduction in diverse cell types. These family members tether calcineurin to alpha-actinin at the z-line of the sarcomere of cardiac and skeletal muscle cells, and thus they are important for calcineurin signaling. Mutations in this gene cause cardiomyopathy familial hypertrophic type 16, a hereditary heart disorder. [provided by RefSeq, Aug 2011]		

— VALIDATION IMAGES —

Sample: Lane 1: Mouse Heart tissue lysates Lane 2: Mouse Cerebrum tissue lysates Lane 3: Rat Cerebrum tissue lysates Primary: Anti-Myozenin 2 (bs-18975R) at 1/1000 dilution Secondary: IRDye800CW Goat Anti-Rabbit IgG at 1/20000 dilution Predicted band size: 30 kDa Observed band size: 32 kDa