

---

## Recombinant human ENO1 Protein, N-MBP & C-His (HEK293)

Catalog Number: bs-47240P

Species: Human

AA Seq: 1-434/434

Tags: N-MBP & C-His

Activity: Not tested

Purity: > 85% as determined by SDS-PAGE

Purification: AC

Form: Liquid

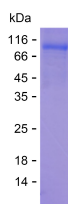
Storage: 150 mM PBS

Stored at -70°C or -20°C for one year. Avoid repeated freeze/thaw cycles. Stored at 2 to 8 °C for 2 days after thawing.

**Background:** Enolase 1 is a multifunctional enzyme that, as well as its role in glycolysis, plays a part in various processes such as growth control, hypoxia tolerance and allergic responses. May also function in the intravascular and pericellular fibrinolytic system due to its ability to serve as a receptor and activator of plasminogen on the cell surface of several cell-types such as leukocytes and neurons. Stimulates immunoglobulin production. MBP1 binds to the myc promoter and acts as a transcriptional repressor. May be a tumor suppressor. Enolase 2 has neurotrophic and neuroprotective properties on a broad spectrum of central nervous system (CNS) neurons. Binds, in a calcium-dependent manner, to cultured neocortical neurons and promotes cell survival. Enolase 3 appears to have a function in striated muscle development and regeneration.

### VALIDATION IMAGES

---



The purified product was run on 15% SDS-PAGE at reducing conditions. The gel was stained with Coomassie brilliant blue and destained. Note: The molecular weight of the protein as observed on SDS-PAGE under reducing conditions may differ from its predicted value, due to variations

in electrophoretic mobilities.