

E-Selectin Rabbit pAb

Catalog Number: bs-43646R

Target Protein: E-Selectin

Concentration: 1mg/ml

Host: Rabbit

Clonality: Polyclonal

Isotype: IgG

Applications: WB (1:500-2000), IHC-P (1:100-500), IHC-F (1:100-500), IF (1:100-500)

Reactivity: Human

Predicted MW: 65

Subcellular Cell membrane

Locations:

Entrez Gene: 6401

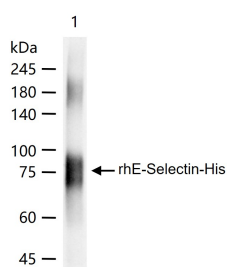
Swiss Prot: P16581

Purification: affinity purified by Protein A

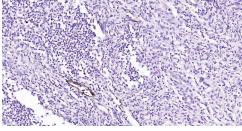
Storage: Shipped at 4°C. Store at -20 °C for one year. Avoid repeated freeze/thaw cycles.

Background: The protein encoded by this gene is found in cytokine-stimulated endothelial cells and is thought to be responsible for the accumulation of blood leukocytes at sites of inflammation by mediating the adhesion of cells to the vascular lining. It exhibits structural features such as the presence of lectin- and EGF-like domains followed by short consensus repeat (SCR) domains that contain 6 conserved cysteine residues. These proteins are part of the selectin family of cell adhesion molecules. Adhesion molecules participate in the interaction between leukocytes and the endothelium and appear to be involved in the pathogenesis of atherosclerosis. [provided by RefSeq, Jul 2008]

VALIDATION IMAGES



100 ng rhE-Selectin-His protein (bs-43646P) per lane probed with E-Selectin polyclonal antibody respectively, unconjugated (bs-43646R) at 1:1000 dilution and 4°C overnight incubation. Followed by corresponding conjugated secondary antibody incubation at r.t. for 60 min.



Paraformaldehyde-fixed, paraffin embedded Human Colon Cancer; Antigen retrieval by boiling in sodium citrate buffer (pH6.0) for 15 min; Antibody incubation with E-Selectin Polyclonal Antibody, Unconjugated (bs-43646R) at 1:200 overnight at 4°C, followed by conjugation to the SP Kit (Rabbit, SP-0023) and DAB (C-0010) staining.