

**bs-2251R****[ Primary Antibody ]****Bioss**  
**ANTIBODIES**

www.bioss.com.cn

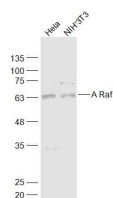
sales@bioss.com.cn

techsupport@bioss.com.cn

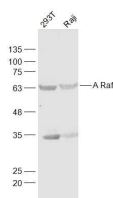
400-901-9800

**A Raf Rabbit pAb****— DATASHEET —**

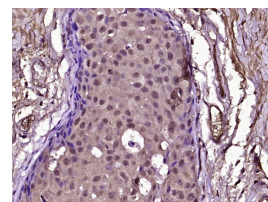
<b>Host:</b> Rabbit	<b>Isotype:</b> IgG	<b>Applications:</b> WB (1:500-2000) <b>IHC-P</b> (1:100-500) <b>IHC-F</b> (1:100-500) <b>IF</b> (1:100-500)  <b>Reactivity:</b> Human, Mouse, Rat  <b>Predicted MW.:</b> 68 kDa  <b>Subcellular Location:</b> Cytoplasm
<b>Clonality:</b> Polyclonal		
<b>GeneID:</b> 369	<b>SWISS:</b> P10398	
<b>Target:</b> A Raf		
<b>Immunogen:</b> KLH conjugated synthetic peptide derived from human A Raf/ARAF: 151-250/606.		
<b>Purification:</b> affinity purified by Protein A		
<b>Concentration:</b> 1mg/ml		
<b>Storage:</b> 0.01M TBS (pH7.4) with 1% BSA, 0.02% Proclin300 and 50% Glycerol. Shipped at 4°C. Store at -20°C for one year. Avoid repeated freeze/thaw cycles.		
<b>Background:</b> The RAF family of signaling proteins has three isoforms: A RAF, RAF 1 and B RAF. These proteins are instrumental in forwarding the stimulus generated by mitogens from monomeric G proteins to the MAP kinase pathway. RAF 1 is known to be downstream of Ras and binds to it by an N terminal noncatalytic domain. This domain is conserved in A RAF and B RAF. 14-3-3 is also known to be an activator of RAFs. Activated RAF directly phosphorylates and activates MEK. A RAF is expressed at a very high concentration in urogenital and kidney tissues.		

**— VALIDATION IMAGES —**

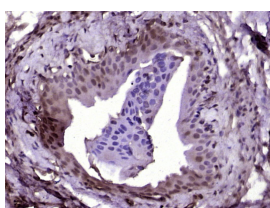
Sample: HeLa(Human) Cell Lysate at 30 ug  
 NIH/3T3(Mouse) Cell Lysate at 30 ug Primary:  
 Anti-A Raf (bs-2251R) at 1/1000 dilution  
 Secondary: IRDye800CW Goat Anti-Rabbit IgG at  
 1/20000 dilution Predicted band size: 68 kD  
 Observed band size: 65 kD



Sample: 293T(Human) Cell Lysate at 30 ug  
 Raji(Human) Cell Lysate at 30 ug Primary: Anti-A  
 Raf (bs-2251R) at 1/1000 dilution Secondary:  
 IRDye800CW Goat Anti-Rabbit IgG at 1/20000  
 dilution Predicted band size: 68 kD Observed  
 band size: 65 kD



Paraformaldehyde-fixed, paraffin embedded  
 (Human breast carcinoma); Antigen retrieval by  
 boiling in sodium citrate buffer (pH6.0) for  
 15min; Block endogenous peroxidase by 3%  
 hydrogen peroxide for 20 minutes; Blocking  
 buffer (normal goat serum) at 37°C for 30min;  
 Antibody incubation with (A Raf) Polyclonal  
 Antibody, Unconjugated (bs-2251R) at 1:400  
 overnight at 4°C, followed by operating  
 according to SP Kit(Rabbit) (sp-0023)  
 instructions and DAB staining.



Paraformaldehyde-fixed, paraffin embedded  
 (Rat bladder); Antigen retrieval by boiling in  
 sodium citrate buffer (pH6.0) for 15min; Block  
 endogenous peroxidase by 3% hydrogen  
 peroxide for 20 minutes; Blocking buffer (normal

Important Note: This product as supplied is intended for research use only, not for use in human, therapeutic or diagnostic applications.

goat serum) at 37°C for 30min; Antibody incubation with (A Raf) Polyclonal Antibody, Unconjugated (bs-2251R) at 1:400 overnight at 4°C, followed by operating according to SP Kit(Rabbit) (sp-0023) instructions and DAB staining.