

bs-21244R**[Primary Antibody]****SLC26A10 Rabbit pAb****Bioss**
ANTIBODIES

www.bioss.com.cn

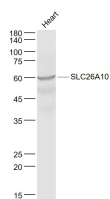
sales@bioss.com.cn

techsupport@bioss.com.cn

400-901-9800

— DATASHEET —

Host: Rabbit	Isotype: IgG	Applications: WB (1:500-2000)
Clonality: Polyclonal		Reactivity: Mouse (predicted: Human)
GeneID: 65012	SWISS: Q8NG04	
Target: SLC26A10		
Immunogen: KLH conjugated synthetic peptide derived from human SLC26A10: 1-100/563.		Predicted MW.: 60 kDa
Purification: affinity purified by Protein A		Subcellular Location: Cell membrane
Concentration: 1mg/ml		
Storage: Preservative: 0.02% Proclin300, Constituents: 1% BSA, 0.01M PBS, pH7.4. Shipped at 4°C. Store at -20°C for one year. Avoid repeated freeze/thaw cycles.		
Background: SLC26A10 (Solute Carrier Family 26 Member 10) is a Protein Coding gene. GO annotations related to this gene include antiporter activity and sulfate transmembrane transporter activity. An important paralog of this gene is SLC26A7.		

— VALIDATION IMAGES —

Sample: Heart (Mouse) Lysate at 40 ug Primary:

Anti- SLC26A10 (bs-21244R) at 1/1000 dilution

Secondary: IRDye800CW Goat Anti-Rabbit IgG at

1/20000 dilution Predicted band size: 60 kD

Observed band size: 60 kD