

bs-18968R

[Primary Antibody]

RUNDC3B Rabbit pAb

BioSS
ANTIBODIES

www.bioss.com.cn

sales@bioss.com.cn

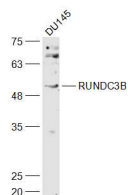
techsupport@bioss.com.cn

400-901-9800

— DATASHEET —

Host: Rabbit	Isotype: IgG	Applications: WB (1:500-2000)
Clonality: Polyclonal		
GeneID: 154661	SWISS: Q96NL0	
Target: RUNDC3B		
Immunogen: KLH conjugated synthetic peptide derived from human RUNDC3B: 51-150/473.		
Purification: affinity purified by Protein A		
Concentration: 1mg/ml		
Storage: 0.01M TBS (pH7.4) with 1% BSA, 0.02% Proclin300 and 50% Glycerol. Shipped at 4°C. Store at -20°C for one year. Avoid repeated freeze/thaw cycles.		
		Reactivity: Human (predicted: Mouse, Rat, Rabbit, Pig, Dog, Horse)
		Predicted MW.: 53 kDa
		Subcellular Location: Cytoplasm ,Nucleus

— VALIDATION IMAGES —



Sample: DU145(Human) Cell Lysate at 30 ug
Primary: Anti-RUNDC3B (bs-18968R) at 1/1000
dilution Secondary: IRDye800CW Goat Anti-
Rabbit IgG at 1/20000 dilution Predicted band
size: 53 kD Observed band size: 53 kD