

**bs-2390R****[ Primary Antibody ]****Aconitase 2 Rabbit pAb****BioSS**  
**ANTIBODIES**

www.bioss.com.cn

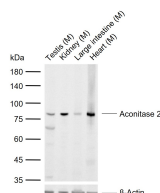
sales@bioss.com.cn

techsupport@bioss.com.cn

400-901-9800

**— DATASHEET —**

<b>Host:</b> Rabbit <b>Clonality:</b> Polyclonal <b>GeneID:</b> 50 <b>Target:</b> Aconitase 2 <b>Immunogen:</b> KLH conjugated synthetic peptide derived from human Aconitase 2: 651-750/780. <b>Purification:</b> affinity purified by Protein A <b>Concentration:</b> 1mg/ml <b>Storage:</b> 0.01M TBS (pH7.4) with 1% BSA, 0.02% Proclin300 and 50% Glycerol. Shipped at 4°C. Store at -20°C for one year. Avoid repeated freeze/thaw cycles. <b>Background:</b> The protein encoded by this gene belongs to the aconitase/IPM isomerase family. It is an enzyme that catalyzes the interconversion of citrate to isocitrate via cis-aconitate in the second step of the TCA cycle. This protein is encoded in the nucleus and functions in the mitochondrion. It was found to be one of the mitochondrial matrix proteins that are preferentially degraded by the serine protease 15(PRSS15), also known as Lon protease, after oxidative modification. [provided by RefSeq, Jul 2008]	<b>Isotype:</b> IgG  <b>SWISS:</b> Q99798	<b>Applications:</b> WB (1:500-2000)  <b>Reactivity:</b> Mouse (predicted: Human, Rat, Rabbit, Pig, Cow, Dog, Horse)  <b>Predicted MW.:</b> 86 kDa  <b>Subcellular Location:</b> Cytoplasm
---	---	--

**— VALIDATION IMAGES —**

Sample: Lane 1: Mouse Testis tissue lysates Lane 2: Mouse Kidney tissue lysates Lane 3: Mouse Large intestine tissue lysates Lane 4: Mouse Heart tissue lysates Primary: Anti-Aconitase 2 (bs-2390R) at 1/1000 dilution Secondary: IRDye800CW Goat Anti-Rabbit IgG at 1/20000 dilution Predicted band size: 86 kDa Observed band size: 82 kDa