

---

## ETBR Rabbit pAb

Catalog Number: bs-2363R

Target Protein: ETBR

Concentration: 1mg/ml

Form: Liquid

Host: Rabbit

Clonality: Polyclonal

Isotype: IgG

Applications: WB (1:500-2000)

Reactivity: Human (predicted: Mouse, Rat, Rabbit, Pig, Cow, Chicken, Dog, Horse)

Predicted MW: 50 kDa

Entrez Gene: 1910

Swiss Prot: P24530

Source: KLH conjugated synthetic peptide derived from human EDNRB: 31-130/442.

Purification: affinity purified by Protein A

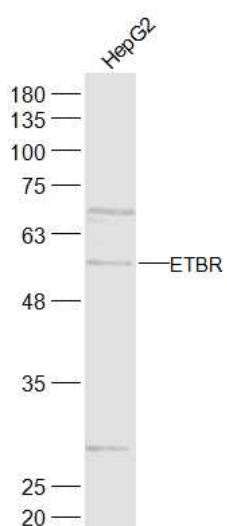
Storage: 0.01M TBS (pH7.4) with 1% BSA, 0.02% Proclin300 and 50% Glycerol.

Shipped at 4°C. Store at -20°C for one year. Avoid repeated freeze/thaw cycles.

**Background:** Endothelin receptor type B (ETRB) is a G protein-coupled receptor that activates a phosphatidylinositol-calcium second messenger system. Its ligand, endothelin, consists of a family of three potent vasoactive peptides: ET1, ET2, and ET3. A splice variant (SVR), differing in the intracellular C terminal domain, has been described for this receptor. Both WT and the variant bind ET1. However, they exhibit different responses upon binding - suggesting that these two variants are functionally distinct.

### VALIDATION IMAGES

---



Sample: HepG2(Human) Cell Lysate at 30 ug Primary: Anti-ETBR (bs-2363R) at 1/500 dilution Secondary: IRDye800CW Goat Anti-Rabbit IgG at 1/20000 dilution Predicted band size: 50 kD Observed band size: 55 kD

## PRODUCT SPECIFIC PUBLICATIONS

**[IF=1.564]** Haizhao Zhao. et al. The Influence of Bosentan on MicroRNA-27a/PPAR $\gamma$ /ET-1 Signaling Pathway in Pulmonary Artery Hypertension. 2021 Apr 15 WB ; Human . 33856498