

bs-24572R**[Primary Antibody]****PDGF-D/SCDGFB Rabbit pAb****Bioss**
ANTIBODIES

www.bioss.com.cn

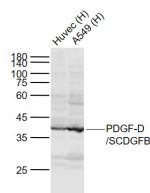
sales@bioss.com.cn

techsupport@bioss.com.cn

400-901-9800

— DATASHEET —

Host: Rabbit	Isotype: IgG	Applications: WB (1:500-2000)
Clonality: Polyclonal		Reactivity: Human (predicted: Mouse, Rat, Rabbit, Pig, Sheep, Cow, Horse)
GeneID: 80310	SWISS: Q9GZP0	
Target: PDGF-D/SCDGFB		Predicted MW.: 41 kDa
Immunogen: KLH conjugated synthetic peptide derived from human PDGF-D/SCDGFB: 1-100/370.		Subcellular Location: Secreted ,Extracellular
Purification: affinity purified by Protein A		Location: matrix
Concentration: 1mg/ml		
Storage: 0.01M TBS (pH7.4) with 1% BSA, 0.02% Proclin300 and 50% Glycerol. Shipped at 4°C. Store at -20°C for one year. Avoid repeated freeze/thaw cycles.		
Background: SCDGFB (Spinal cord derived growth factor B) is a member of the platelet derived growth factor family. It only forms homodimers and does not dimerize with the other three family members. It is a potent mitogen for cells of mesenchymal origin. It is activated by proteolytic cleavage and this active form acts as a specific ligand for beta platelet derived growth factor receptor. It is released by platelets upon wounding and plays an important role in stimulating adjacent cells to grow and thereby heals the wound. It induces macrophage recruitment, increased interstitial pressure, and blood vessel maturation during angiogenesis.		

— VALIDATION IMAGES —

Sample: Lane 1: Huvec (Human) Cell Lysate at 30 ug
Lane 2: A549 (Human) Cell Lysate at 30 ug
Primary: Anti-PDGF-D/SCDGFB (bs-24572R) at 1/1000 dilution
Secondary: IRDye800CW Goat Anti-Rabbit IgG at 1/20000 dilution
Predicted band size: 43 kD
Observed band size: 40 kD