

bs-5044R**[Primary Antibody]****COL4A3BP Rabbit pAb****BioSS**
ANTIBODIES

www.bioss.com.cn

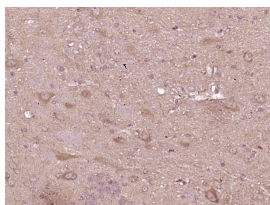
sales@bioss.com.cn

techsupport@bioss.com.cn

400-901-9800

— DATASHEET —

Host: Rabbit	Isotype: IgG	Applications: IHC-P (1:100-500) IHC-F (1:100-500) IF (1:100-500)
Clonality: Polyclonal		
GeneID: 10087	SWISS: Q9Y5P4	
Target: COL4A3BP		Reactivity: Rat (predicted: Human, Mouse, Rabbit, Cow)
Immunogen: KLH conjugated synthetic peptide derived from human COL4A3BP: 551-624/624.		
Purification: affinity purified by Protein A		Predicted MW.: 71 kDa
Concentration: 1mg/ml		Subcellular Location: Cytoplasm
Storage: 0.01M TBS (pH7.4) with 1% BSA, 0.02% Proclin300 and 50% Glycerol. Shipped at 4°C. Store at -20°C for one year. Avoid repeated freeze/thaw cycles.		
Background: COL4A3BP is a kinase that specifically phosphorylates the N terminal region of the non collagenous domain of the alpha 3 chain of type IV collagen, known as the Goodpasture antigen. Goodpasture disease is the result of an autoimmune response directed at this antigen. One isoform of this protein is also involved in ceramide intracellular transport. Two transcripts exist for this gene.		

— VALIDATION IMAGES —

Paraformaldehyde-fixed, paraffin embedded (Rat brain); Antigen retrieval by boiling in sodium citrate buffer (pH6.0) for 15min; Block endogenous peroxidase by 3% hydrogen peroxide for 20 minutes; Blocking buffer (normal goat serum) at 37°C for 30min; Antibody incubation with (COL4A3BP) Polyclonal Antibody, Unconjugated (bs-5044R) at 1:400 overnight at 4°C, followed by operating according to SP Kit(Rabbit) (sp-0023) instructions and DAB staining.