

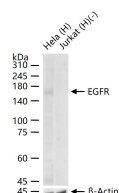
bs-43560R**[Primary Antibody]****EGFR Rabbit pAb****Bioss**
ANTIBODIES

www.bioss.com.cn

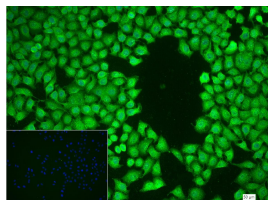
sales@bioss.com.cn

techsupport@bioss.com.cn

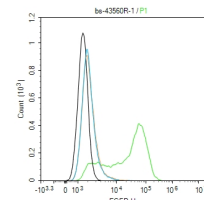
400-901-9800

DATASHEET**Host:** Rabbit**Isotype:** IgG**Clonality:** Polyclonal**GeneID:** 1956**SWISS:** P00533**Target:** EGFR**Immunogen:** Recombinant human EGFR protein: 25-645/1210.**Purification:** affinity purified by Protein A**Concentration:** 1mg/ml**Storage:** 0.01M TBS(pH7.4) with 1% BSA, 0.02% Proclin300 and 50% Glycerol.
Shipped at 4°C. Store at -20 °C for one year. Avoid repeated freeze/thaw cycles.**Background:** The protein encoded by this gene is a transmembrane glycoprotein that is a member of the protein kinase superfamily. This protein is a receptor for members of the epidermal growth factor family. EGFR is a cell surface protein that binds to epidermal growth factor. Binding of the protein to a ligand induces receptor dimerization and tyrosine autophosphorylation and leads to cell proliferation. Mutations in this gene are associated with lung cancer. Multiple alternatively spliced transcript variants that encode different protein isoforms have been found for this gene. [provided by RefSeq, Jul 2010]**Applications:** WB (1:500-2000)**Flow-Cyt** (1ug/Test)**ICC/IF** (1:50-1:200)**ELISA** (1:5000-10000)**Reactivity:** Human**Predicted MW.:** 120 kDa**Subcellular Location:** Secreted ,Cell membrane ,Cytoplasm ,Nucleus**VALIDATION IMAGES**

25 ug total protein per lane of various lysates (see on figure) probed with EGFR polyclonal antibody, unconjugated (bs-43560R) at 1:1000 dilution and 4°C overnight incubation. Followed by conjugated secondary antibody incubation at r.t. for 60 min.



4% Paraformaldehyde-fixed HeLa (H) cell; Triton X-100 at r.t. for 20 min; Antibody incubation with (EGFR) polyclonal Antibody, unconjugated (bs-43560R) 1:100, 90 min at 37°C; followed by conjugated Goat Anti-Rabbit IgG antibody (green, bs-40295G-FITC) at 37°C for 90 min, DAPI (blue, C02-04002) was used to stain the cell nuclei. PBS instead of the primary antibody was used as the blank control.



The HeLa (H) cells were incubated in 5%BSA to block non-specific protein-protein interactions (30 min at r.t.). Primary Antibody (green): Rabbit Anti-EGFR antibody (bs-43560R): 1 µg/10⁶ cells; Secondary Antibody (white blue): Goat anti-Rabbit IgG-FITC (bs-40295G-FITC): 1 µg/test. Isotype Control (orange): Rabbit IgG (bs-0295P). Blank control (black): PBS. Acquisition of 20,000 events was performed.