

bs-5046R**[Primary Antibody]****CYP46 Rabbit pAb****BioSS**
ANTIBODIES

www.bioss.com.cn

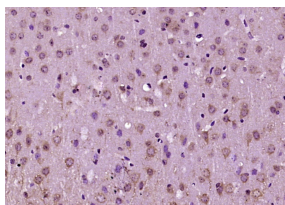
sales@bioss.com.cn

techsupport@bioss.com.cn

400-901-9800

— DATASHEET —

Host: Rabbit Clonality: Polyclonal GeneID: 10858 Target: CYP46 Immunogen: KLH conjugated synthetic peptide derived from human CYP46: 51-150/500. Purification: affinity purified by Protein A Concentration: 1mg/ml Storage: 0.01M TBS (pH7.4) with 1% BSA, 0.02% Proclin300 and 50% Glycerol. Shipped at 4°C. Store at -20°C for one year. Avoid repeated freeze/thaw cycles. Background: The Cyp46 gene encodes a member of the cytochrome P450 superfamily of enzymes. The cytochrome P450 proteins are monooxygenases which catalyze many reactions involved in drug metabolism and synthesis of cholesterol, steroids and other lipids. This endoplasmic reticulum protein is expressed exclusively in the brain, where it converts cholesterol to 24S-hydroxycholesterol by adding a hydroxyl group to cholesterol, producing a product that is more soluble than cholesterol and able to be exported from the brain. Cyp46 is also known as 24S-cholesterol hydroxylase.	Isotype: IgG SWISS: Q9Y6A2	Applications: IHC-P (1:100-500) IHC-F (1:100-500) IF (1:100-500) Reactivity: Mouse (predicted: Human, Rat, Rabbit, Sheep, Cow, Dog, Horse) Predicted MW.: 57 kDa Subcellular Location: Cytoplasm
--	---	--

— VALIDATION IMAGES —

Paraformaldehyde-fixed, paraffin embedded (mouse brain tissue); Antigen retrieval by boiling in sodium citrate buffer (pH6.0) for 15min; Block endogenous peroxidase by 3% hydrogen peroxide for 20 minutes; Blocking buffer (normal goat serum) at 37°C for 30min; Antibody incubation with (CYP46) Polyclonal Antibody, Unconjugated (bs-5046R) at 1:400 overnight at 4°C, followed by operating according to SP Kit(Rabbit) (sp-0023) instructions and DAB staining.

— SELECTED CITATIONS —

- **[IF=2.75]** Meade et al. Quantitative proteomic analysis of the brainstem following lethal sarin exposure. (2015) Brain.Re. 1611:101-13 WB ;pig. 25842371