

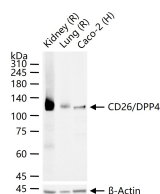
**bsm-60915R****[ Primary Antibody ]****DPP4/CD26 Recombinant Rabbit mAb****Bioss**  
**ANTIBODIES**

www.bioss.com.cn

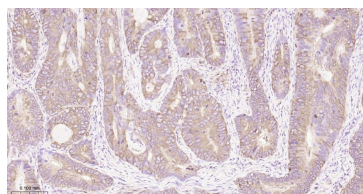
sales@bioss.com.cn

techsupport@bioss.com.cn

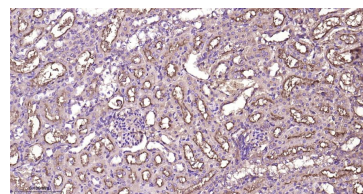
400-901-9800

**— DATASHEET —****Host:** Rabbit**Isotype:** IgG**Clonality:** Recombinant**CloneNo.:** 4C15**GeneID:** 1803**SWISS:** P27487**Target:** DPP4/CD26**Purification:** affinity purified by Protein A**Concentration:** 1mg/ml**Storage:** 0.01M TBS(pH7.4) with 1% BSA, 0.02% Proclin300 and 50% Glycerol.  
Shipped at 4°C. Store at -20 °C for one year. Avoid repeated freeze/thaw cycles.**Background:** The DPP4 gene encodes dipeptidyl peptidase 4, which is identical to adenosine deaminase complexing protein-2, and to the T-cell activation antigen CD26. It is an intrinsic type II transmembrane glycoprotein and a serine exopeptidase that cleaves X-proline dipeptides from the N-terminus of polypeptides. Dipeptidyl peptidase 4 is highly involved in glucose and insulin metabolism, as well as in immune regulation. This protein was shown to be a functional receptor for Middle East respiratory syndrome coronavirus (MERS-CoV), and protein modeling suggests that it may play a similar role with SARS-CoV-2, the virus responsible for COVID-19. [provided by RefSeq, Apr 2020]**Applications:** **WB** (1:500-2000)**IHC-P** (1:100-500)**IHC-F** (1:100-500)**IF** (1:100-500)**Reactivity:** Human, Mouse, Rat**Predicted MW.:** 84 kDa**Subcellular Location:** Cell membrane ,Cytoplasm**— VALIDATION IMAGES —**

25 ug total protein per lane of various lysates (see on figure) probed with CD26/DPP4 monoclonal antibody, unconjugated (bsm-60915R) at 1:1000 dilution and 4°C overnight incubation. Followed by conjugated secondary antibody incubation at r.t. for 60 min.



Paraformaldehyde-fixed, paraffin embedded Human Colon Cancer; Antigen retrieval by boiling in sodium citrate buffer (pH6.0) for 15 min; The section was incubated with DPP4/CD26 Monoclonal Antibody, Unconjugated (bsm-60915R) at 1:200 overnight at 4°C, followed by conjugation to the bs-0295G-HRP and DAB (C-0010) staining.



Paraformaldehyde-fixed, paraffin embedded Rat Kidney; Antigen retrieval by boiling in sodium citrate buffer (pH6.0) for 15 min; The section was incubated with DPP4/CD26 Monoclonal Antibody, Unconjugated (bsm-60915R) at 1:200 overnight at 4°C, followed by conjugation to the bs-0295G-HRP and DAB (C-0010) staining.

**— SELECTED CITATIONS —**

- **[IF=2.4]** Yanjie Huang, et al. Dipeptidyl peptidase 4 is a cofactor for porcine epidemic diarrhea virus infection. VETERINARY MICROBIOLOGY. 2025 Feb;301:110370. Western blot ;. 39765007