

bsm-52182R**[Primary Antibody]****BioSS**
ANTIBODIES

www.bioss.com.cn

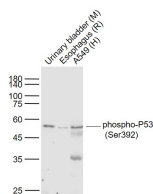
sales@bioss.com.cn

techsupport@bioss.com.cn

400-901-9800

phospho-P53 (Ser392) Recombinant Rabbit mAb**— DATASHEET —**

Host: Rabbit	Isotype: IgG	Applications: WB (1:1000-2000) IHC-P (1:100-500) IHC-F (1:50-200) IF (1:50-200) ICC/IF (1:50-200) Reactivity: Human, Mouse, Rat (predicted: Pig, Sheep, Cow, Dog, Horse) Predicted MW.: 43 kDa Subcellular Location: Cytoplasm ,Nucleus
Clonality: Recombinant	CloneNo.: 3A1	
GeneID: 7157	SWISS: P04637	
Target: phospho-P53 (Ser392)		
Immunogen: KLH conjugated Synthesised phosphopeptide derived from human p53 around the phosphorylation site of Ser392: PD(p-S)D.		
Purification: affinity purified by Protein A		
Concentration: 1mg/ml		
Storage: 0.01M TBS (pH7.4) with 1% BSA, 0.02% Proclin300 and 50% Glycerol. Shipped at 4°C. Store at -20°C for one year. Avoid repeated freeze/thaw cycles.		
Background: This gene encodes a tumor suppressor protein containing transcriptional activation, DNA binding, and oligomerization domains. The encoded protein responds to diverse cellular stresses to regulate expression of target genes, thereby inducing cell cycle arrest, apoptosis, senescence, DNA repair, or changes in metabolism. Mutations in this gene are associated with a variety of human cancers, including hereditary cancers such as Li-Fraumeni syndrome. Alternative splicing of this gene and the use of alternate promoters result in multiple transcript variants and isoforms. Additional isoforms have also been shown to result from the use of alternate translation initiation codons (PMIDs: 12032546, 20937277). [provided by RefSeq, Feb 2013].		

— VALIDATION IMAGES —

Sample: Lane 1: Urinary bladder (Mouse) Lysate at 40 ug
Lane 2: Esophagus (Rat) Lysate at 40 ug
Lane 3: A549 (Human) Cell Lysate at 30 ug
Primary: Anti-phospho-P53 (Ser392) (bsm-52182R) at 1/1000 dilution
Secondary: IRDye800CW Goat Anti-Rabbit IgG at 1/20000 dilution
Predicted band size: 53 kD
Observed band size: 53 kD