

## phospho-MEK1 (Ser298) Recombinant Rabbit mAb

Catalog Number: bsm-52175R

Target Protein: phospho-MEK1 (Ser298)

Concentration: 1mg/ml

Form: Liquid

Host: Rabbit

Clonality: Recombinant

Clone No.: 20B10

Isotype: IgG

Applications: WB (1:500-2000), IHC-P (1:50-200), IHC-F (1:50-200), IF (1:50-200), ICC/IF (1:50-200)

Reactivity: Human, Mouse, Rat

Predicted MW: 43 kDa

Entrez Gene: 5604

Swiss Prot: Q02750

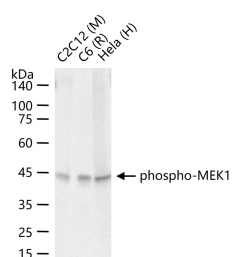
Source: KLH conjugated Synthesised phosphopeptide derived from human MAPKK1 around the phosphorylation site of Ser298: PL(p-S)SY.

Purification: affinity purified by Protein A

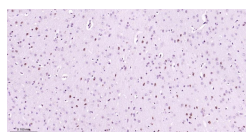
Storage: 0.01M TBS (pH7.4) with 1% BSA, 0.02% Proclin300 and 50% Glycerol.

Shipped at 4°C. Store at -20°C for one year. Avoid repeated freeze/thaw cycles.

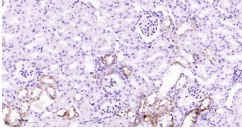
### VALIDATION IMAGES



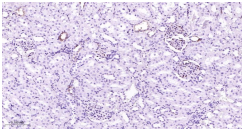
25 ug total protein per lane of various lysates (see on figure) probed with phospho-MEK1 (Ser298) monoclonal antibody, unconjugated (bsm-52175R) at 1:1000 dilution and 4°C overnight incubation. Followed by conjugated secondary antibody incubation at r.t. for 60 min.



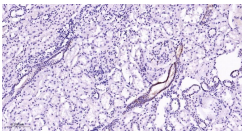
Paraformaldehyde-fixed, paraffin embedded Mouse brain; Antigen retrieval by boiling in sodium citrate buffer (pH6.0) for 15 min; Antibody incubation with phospho-MEK1 (Ser298) Monoclonal Antibody, Unconjugated (bsm-52175R) at 1:200 overnight at 4°C, followed by conjugation to the bs-0295G-HRP and DAB (C-0010) staining.



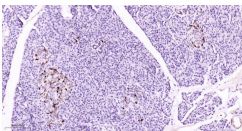
Paraformaldehyde-fixed, paraffin embedded Mouse kidney; Antigen retrieval by boiling in sodium citrate buffer (pH6.0) for 15 min; Antibody incubation with phospho-MEK1 (Ser298) Monoclonal Antibody, Unconjugated(bsm-52175R) at 1:200 overnight at 4°C, followed by conjugation to the bs-0295G-HRP and DAB (C-0010) staining.



Paraformaldehyde-fixed, paraffin embedded Rat kidney; Antigen retrieval by boiling in sodium citrate buffer (pH6.0) for 15 min; Antibody incubation with phospho-MEK1 (Ser298) Monoclonal Antibody, Unconjugated(bsm-52175R) at 1:200 overnight at 4°C, followed by conjugation to the bs-0295G-HRP and DAB (C-0010) staining.



Paraformaldehyde-fixed, paraffin embedded Human kidney; Antigen retrieval by boiling in sodium citrate buffer (pH6.0) for 15 min; Antibody incubation with phospho-MEK1 (Ser298) Monoclonal Antibody, Unconjugated(bsm-52175R) at 1:200 overnight at 4°C, followed by conjugation to the bs-0295G-HRP and DAB (C-0010) staining.



Paraformaldehyde-fixed, paraffin embedded Human pancreas; Antigen retrieval by boiling in sodium citrate buffer (pH6.0) for 15 min; Antibody incubation with phospho-MEK1 (Ser298) Monoclonal Antibody, Unconjugated(bsm-52175R) at 1:200 overnight at 4°C, followed by conjugation to the bs-0295G-HRP and DAB (C-0010) staining.