

bsm-43646M**[Primary Antibody]****BioSS**
ANTIBODIES

www.bioss.com.cn

sales@bioss.com.cn

techsupport@bioss.com.cn

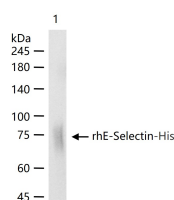
400-901-9800

E-Selectin Mouse mAb**— DATASHEET —****Host:** Mouse**Clonality:** Monoclonal**GeneID:** 6401**Target:** E-Selectin**Purification:** affinity purified by Protein A**Storage:** 0.01M PBS(pH7.4).

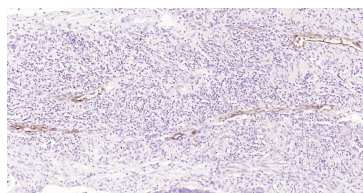
Shipped at 4°C. Store at -20 °C for one year. Avoid repeated freeze/thaw cycles.

CloneNo.: 1G1**SWISS:** P16581**Applications:** WB (1:100-500)**IHC-P** (1:100-500)**IHC-F** (1:100-500)**IF** (1:100-500)**Reactivity:** Human**Predicted
MW.:** 65 kDa**Subcellular
Location:** Cell membrane

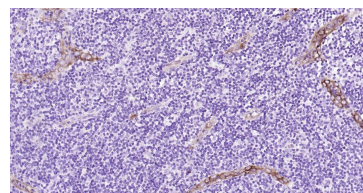
Background: The protein encoded by this gene is found in cytokine-stimulated endothelial cells and is thought to be responsible for the accumulation of blood leukocytes at sites of inflammation by mediating the adhesion of cells to the vascular lining. It exhibits structural features such as the presence of lectin- and EGF-like domains followed by short consensus repeat (SCR) domains that contain 6 conserved cysteine residues. These proteins are part of the selectin family of cell adhesion molecules. Adhesion molecules participate in the interaction between leukocytes and the endothelium and appear to be involved in the pathogenesis of atherosclerosis. [provided by RefSeq, Jul 2008]

— VALIDATION IMAGES —

100 ng rhE-Selectin-His protein (bs-43646P) per lane probed with E-Selectin monoclonal antibody respectively, unconjugated (bsm-43646M) at 1:200 dilution and 4°C overnight incubation. Followed by corresponding conjugated secondary antibody incubation at r.t. for 60 min.



Paraformaldehyde-fixed, paraffin embedded Human Colon Cancer; Antigen retrieval by boiling in sodium citrate buffer (pH6.0) for 15 min; Antibody incubation with E-Selectin Monoclonal Antibody, Unconjugated(bsm-43646M) at 1:200 overnight at 4°C, followed by conjugation to the SP Kit (Mouse, sp-0024) and DAB (C-0010) staining.



Paraformaldehyde-fixed, paraffin embedded Human Tonsil; Antigen retrieval by boiling in sodium citrate buffer (pH6.0) for 15 min; Antibody incubation with E-Selectin Monoclonal Antibody, Unconjugated(bsm-43646M) at 1:200 overnight at 4°C, followed by conjugation to the SP Kit (Mouse, sp-0024) and DAB (C-0010) staining.