

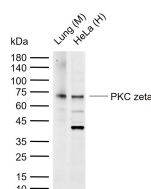
bsm-60921R**[Primary Antibody]****BioSS**
ANTIBODIES

www.bioss.com.cn

sales@bioss.com.cn

techsupport@bioss.com.cn

400-901-9800

PKC zeta Recombinant Rabbit mAb**— DATASHEET —****Host:** Rabbit**Clonality:** Recombinant**GeneID:** 5590**Target:** PKC zeta**Purification:** affinity purified by Protein A**Concentration:** 1mg/ml**Storage:** 0.01M TBS(pH7.4) with 1% BSA, 0.02% Proclin300 and 50% Glycerol.
Shipped at 4°C. Store at -20 °C for one year. Avoid repeated freeze/thaw cycles.**Background:** Protein kinase C (PKC) zeta is a member of the PKC family of serine/threonine kinases which are involved in a variety of cellular processes such as proliferation, differentiation and secretion. Unlike the classical PKC isoenzymes which are calcium-dependent, PKC zeta exhibits a kinase activity which is independent of calcium and diacylglycerol but not of phosphatidylserine. Furthermore, it is insensitive to typical PKC inhibitors and cannot be activated by phorbol ester. Unlike the classical PKC isoenzymes, it has only a single zinc finger module. These structural and biochemical properties indicate that the zeta subspecies is related to, but distinct from other isoenzymes of PKC. Alternative splicing results in multiple transcript variants encoding different isoforms. [provided by RefSeq, Jul 2008].**Applications:** WB (1:500-1000)**Reactivity:** Human, Mouse**Predicted
MW.:** 66 kDa**Subcellular
Location:** Cytoplasm**— VALIDATION IMAGES —**

Sample: Lane 1: Mouse Lung tissue lysates Lane
2: Human HeLa cell lysates Primary: Anti-PKC
zeta (bsm-60921R) at 1/1000 dilution Secondary:
IRDye800CW Goat Anti-Rabbit IgG at 1/20000
dilution Predicted band size: 66 kDa Observed
band size: 72 kDa