

bsm-54066R**[Primary Antibody]****BioSS**
ANTIBODIES

www.bioss.com.cn

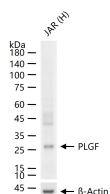
sales@bioss.com.cn

techsupport@bioss.com.cn

400-901-9800

PLGF Recombinant Rabbit mAb**DATASHEET**

Host: Rabbit	Isotype: IgG	Applications: WB (1:500-2000)
Clonality: Recombinant	CloneNo.: 3F11	Reactivity: Human
GeneID: 5228	SWISS: P49763	
Target: PLGF		
Immunogen: A synthesized peptide derived from human PLGF: 50-100/221.		Predicted MW.: 25 kDa
Purification: affinity purified by Protein A		Subcellular Location: Secreted
Concentration: 1mg/ml		
Storage: 0.01M TBS(pH7.4) with 1% BSA, 0.02% Proclin300 and 50% Glycerol. Shipped at 4°C. Store at -20 °C for one year. Avoid repeated freeze/thaw cycles.		
Background: The placental-derived growth factor (PLGF) is a dimeric glycoprotein showing a high degree of sequence similarity to the vascular endothelial growth factor. Alternative splicing of the PLGF primary transcript gives rise to two forms, named PLGF-1 and PLGF-2, which differ only in the insertion of a highly basic 21-amino acid stretch at the carboxyl end. The presence of the PLGF mRNA in thyroid, placenta, lung, and goiter has indicated the tissues where this factor functions. However, the role of PLGF in vascular development has not yet been clearly established.		

VALIDATION IMAGES

25 ug total protein per lane of various lysates (see on figure) probed with PLGF monoclonal antibody, unconjugated (bsm-54066R) at 1:1000 dilution and 4°C overnight incubation. Followed by conjugated secondary antibody incubation at r.t. for 60 min.

SELECTED CITATIONS

- **[IF=4.123]** Jaiswal P et al. Clinical Proteomics Profiling for Biomarker Identification Among Patients Suffering With Indian Post Kala Azar Dermal Leishmaniasis. Front Cell Infect Microbiol. 2020 May 27;10:251. WB ;Human. 32528904
- **[IF=1.9]** Liyan Ye. et al. Notch signaling pathway regulates the progression of fetal growth restriction through mediating immune dysfunction. BIOMED REP. 2025 Jul;23(1):1-9 WB ;Human. 40386306