

bs-7934R**[Primary Antibody]****SHOC2 Rabbit pAb****BioSS**
ANTIBODIES

www.bioss.com.cn

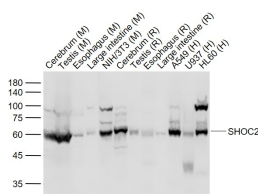
sales@bioss.com.cn

techsupport@bioss.com.cn

400-901-9800

DATASHEET**Host:** Rabbit**Isotype:** IgG**Clonality:** Polyclonal**GeneID:** 8036**SWISS:** Q9UQ13**Target:** SHOC2**Immunogen:** KLH conjugated synthetic peptide derived from human SHOC2/Sur8: 36-120/582.**Purification:** affinity purified by Protein A**Concentration:** 1mg/ml**Storage:** 0.01M TBS (pH7.4) with 1% BSA, 0.02% Proclin300 and 50% Glycerol.

Shipped at 4°C. Store at -20°C for one year. Avoid repeated freeze/thaw cycles.

Background: Regulatory subunit of protein phosphatase 1 (PP1c) that acts as a M-Ras/MRAS effector and participates in MAPK pathway activation. Upon M-Ras/MRAS activation, targets PP1c to specifically dephosphorylate the 'Ser-259' inhibitory site of RAF1 kinase and stimulate RAF1 activity at specialized signaling complexes. Involvement in disease: Defects in SHOC2 are the cause of Noonan syndrome-like with loose anagen hair (NSLAH). NSLAH children display macrocephaly, high forehead, hypertelorism, palpebral ptosis, low-set and posteriorly rotated ears, short and webbed neck and pectus anomalies. Affected subjects also have easily pluckable, sparse, thin and slow-growing hair.**Applications:** WB (1:500-2000)**IHC-P** (1:100-500)**IHC-F** (1:100-500)**IF** (1:100-500)**ELISA** (1:5000-10000)**Reactivity:** Human, Mouse, Rat
(predicted: Sheep, Cow, Chicken, Dog)**Predicted MW.:** 65 kDa**Subcellular Location:** Cytoplasm, Nucleus**VALIDATION IMAGES**

Sample: Lane 1: Cerebrum (Mouse) Lysate at 40 ug
 Lane 2: Testis (Mouse) Lysate at 40 ug
 Lane 3: Esophagus (Mouse) Lysate at 40 ug
 Lane 4: Large intestine (Mouse) Lysate at 40 ug
 Lane 5: NIH/3T3 (Mouse) Cell Lysate at 30 ug
 Lane 6: Cerebrum (Rat) Lysate at 40 ug
 Lane 7: Testis (Rat) Lysate at 40 ug
 Lane 8: Esophagus (Rat) Lysate at 40 ug
 Lane 9: Large intestine (Rat) Lysate at 40 ug
 Lane 10: A549 (Human) Cell Lysate at 30 ug
 Lane 11: U937 (Human) Cell Lysate at 30 ug
 Lane 12: HL60 (Human) Cell Lysate at 30 ug
 Primary: Anti- SHOC2 (bs-7934R) at 1/1000 dilution
 Secondary: IRDye800CW Goat Anti-Rabbit IgG at 1/20000 dilution
 Predicted band size: 62 kD
 Observed band size: 60 kD