

**bs-7931R****[ Primary Antibody ]****PPP2R1A Rabbit pAb****Bioss**  
ANTIBODIES

www.bioss.com.cn

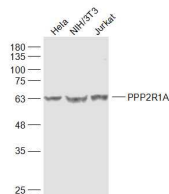
sales@bioss.com.cn

techsupport@bioss.com.cn

400-901-9800

**— DATASHEET —**

<b>Host:</b> Rabbit	<b>Isotype:</b> IgG	<b>Applications:</b> WB (1:500-2000)
<b>Clonality:</b> Polyclonal		<b>Reactivity:</b> Human, Mouse (predicted: Rat, Pig, Cow, Dog, Horse)
<b>GeneID:</b> 5518	<b>SWISS:</b> P30153	<b>Predicted MW.:</b> 65 kDa
<b>Target:</b> PPP2R1A		<b>Subcellular Location:</b> Cytoplasm ,Nucleus
<b>Immunogen:</b> KLH conjugated synthetic peptide derived from human PPP2R1A: 166-255/589.		
<b>Purification:</b> affinity purified by Protein A		
<b>Concentration:</b> 1mg/ml		
<b>Storage:</b> 0.01M TBS (pH7.4) with 1% BSA, 0.02% Proclin300 and 50% Glycerol. Shipped at 4°C. Store at -20°C for one year. Avoid repeated freeze/thaw cycles.		
<b>Background:</b> Protein phosphatase 2A (PP2A) is the most abundant phosphatase specific for serine and threonine phosphorylation in mammalian cells. It consists of a common heteromeric core enzyme, which is composed of a catalytic subunit and a constant regulatory subunit, that associates with a variety of regulatory subunits. The constant regulatory subunit alpha (PPP2R1A) serves as a scaffolding molecule to coordinate the assembly of the catalytic subunit and a variable regulatory beta subunit.		

**— VALIDATION IMAGES —**

Sample: HeLa(Human) Cell Lysate at 30 ug  
NIH/3T3(Mouse) Cell Lysate at 30 ug  
Jurkat(Human) Cell Lysate at 30 ug Primary:  
Anti-PPP2R1A (bs-7931R) at 1/1000 dilution  
Secondary: IRDye800CW Goat Anti-Rabbit IgG at  
1/20000 dilution Predicted band size: 65 kD  
Observed band size: 65 kD