

**bs-7929R**

**[ Primary Antibody ]**

## PPM1B Rabbit pAb

**Bioss**  
ANTIBODIES

www.bioss.com.cn

sales@bioss.com.cn

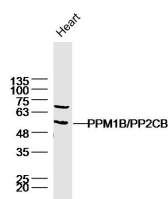
techsupport@bioss.com.cn

400-901-9800

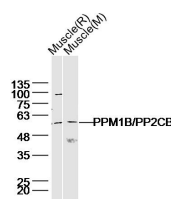
### — DATASHEET —

<b>Host:</b> Rabbit	<b>Isotype:</b> IgG	<b>Applications:</b> WB (1:500-2000)
<b>Clonality:</b> Polyclonal		<b>Reactivity:</b> Mouse, Rat (predicted: Human, Rabbit, Sheep, Cow, Chicken, Dog, Horse)
<b>GeneID:</b> 5495	<b>SWISS:</b> O75688	<b>Predicted MW.:</b> 53 kDa
<b>Target:</b> PPM1B		<b>Subcellular Location:</b> Cell membrane ,Cytoplasm
<b>Immunogen:</b> KLH conjugated synthetic peptide derived from human PPM1B: 1-80/479.		
<b>Purification:</b> affinity purified by Protein A		
<b>Concentration:</b> 1mg/ml		
<b>Storage:</b> 0.01M TBS (pH7.4) with 1% BSA, 0.02% Proclin300 and 50% Glycerol. Shipped at 4°C. Store at -20°C for one year. Avoid repeated freeze/thaw cycles.		

### — VALIDATION IMAGES —



Sample: Heart(Rat) Lysate at 40 ug Primary: Anti-PPM1B/PP2CB(bs-7929R) at 1/300 dilution  
Secondary: IRDye800CW Goat Anti-Rabbit IgG at 1/20000 dilution Predicted band size: 53 kD  
Observed band size: 53 kD



Sample: Muscle (Rat) Lysate at 40 ug Muscle (Mouse) Lysate at 40 ug Primary: Anti-PPM1B/PP2CB(bs-7929R) at 1/300 dilution  
Secondary: IRDye800CW Goat Anti-Rabbit IgG at 1/20000 dilution Predicted band size: 53 kD  
Observed band size: 53 kD