

## p21-ARC Rabbit pAb

Catalog Number: bs-17589R

Target Protein: p21-ARC

Concentration: 1mg/ml

Form: Liquid

Host: Rabbit

Clonality: Polyclonal

Isotype: IgG

Applications: WB (1:500-2000), IHC-P (1:100-500), IHC-F (1:100-500), IF (1:100-500)

Reactivity: Mouse (predicted:Human, Rat, Rabbit, Cow, Chicken, Xenopus laevis)

Predicted MW: 20 kDa

Entrez Gene: 10094

Swiss Prot: O15145

Source: KLH conjugated synthetic peptide derived from human p21-ARC: 2-100/178.

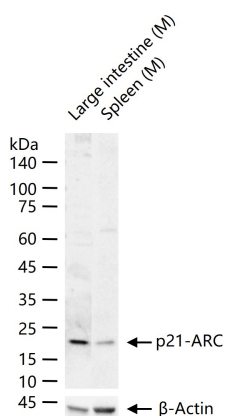
Purification: affinity purified by Protein A

Storage: 0.01M TBS (pH7.4) with 1% BSA, 0.02% Proclin300 and 50% Glycerol.

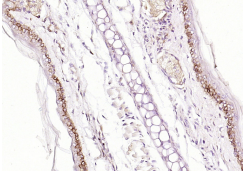
Shipped at 4°C. Store at -20°C for one year. Avoid repeated freeze/thaw cycles.

**Background:** This gene encodes one of seven subunits of the human Arp2/3 protein complex. The Arp2/3 protein complex has been conserved through evolution and is implicated in the control of actin polymerization in cells. Alternatively spliced transcript variants have been found for this gene. [provided by RefSeq, Dec 2013]

### VALIDATION IMAGES



25 ug total protein per lane of various lysates (see on figure) probed with p21-ARC polyclonal antibody, unconjugated (bs-17589R) at 1:1000 dilution and 4°C overnight incubation. Followed by conjugated secondary antibody incubation at r.t. for 60 min.



Paraformaldehyde-fixed, paraffin embedded (mouse skin); Antigen retrieval by boiling in sodium citrate buffer (pH6.0) for 15min; Block endogenous peroxidase by 3% hydrogen peroxide for 20 minutes; Blocking buffer (normal goat serum) at 37°C for 30min; Antibody incubation with (p21-ARC) Polyclonal Antibody, Unconjugated (bs-17589R) at 1:200 overnight at 4°C, followed by operating according to SP Kit(Rabbit) (sp-0023) instructions and DAB staining.