

bs-17585R**[Primary Antibody]****phospho-Rb2 p130 (Ser952) Rabbit pAb****Bioss**
ANTIBODIES

www.bioss.com.cn

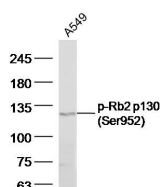
sales@bioss.com.cn

techsupport@bioss.com.cn

400-901-9800

— DATASHEET —

Host: Rabbit	Isotype: IgG	Applications: WB (1:500-2000)
Clonality: Polyclonal		Reactivity: Human (predicted: Mouse, Rat, Rabbit, Pig, Sheep, Cow, Dog, Horse)
GeneID: 5934	SWISS: Q08999	
Target: Rb2 p130 (Ser952)		Predicted MW.: 128 kDa
Immunogen: KLH conjugated synthesised phosphopeptide derived from human Rb2 p130 around the phosphorylation site of Ser952: QN(p-S)PT.		Subcellular Location: Nucleus
Purification: affinity purified by Protein A		
Concentration: 1mg/ml		
Storage: 0.01M TBS (pH7.4) with 1% BSA, 0.02% Proclin300 and 50% Glycerol. Shipped at 4°C. Store at -20°C for one year. Avoid repeated freeze/thaw cycles.		
Background: p130 is related both in structure and function to the retinoblastoma tumor suppressor protein and p107 (collectively known as pocket proteins) and is known to regulate the activity of E2F transcription factors. E2F transcription factors regulate the expression of a number of genes important in cell proliferation, particularly those involved in the progression through G1 and into the S phase of the cell cycle. Binding of p130 converts E2F transcription factors from transcriptional activators to transcriptional repressors.		

— VALIDATION IMAGES —

Sample: A549 Cell (Human) Lysate at 40 ug
Primary: Anti-phospho-Rb2 p130 (Ser952)
(bs-17585R) at 1/300 dilution Secondary:
IRDye800CW Goat Anti-Rabbit IgG at 1/20000
dilution Predicted band size: 128 kD Observed
band size: 128 kD