

bs-7668R**[Primary Antibody]****GPR65 Rabbit pAb****Bioss**
ANTIBODIES

www.bioss.com.cn

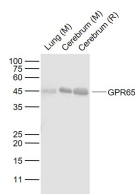
sales@bioss.com.cn

techsupport@bioss.com.cn

400-901-9800

— DATASHEET —

Host: Rabbit	Isotype: IgG	Applications: WB (1:500-2000)
Clonality: Polyclonal		Reactivity: Human, Mouse, Rat
GeneID: 8477	SWISS: Q8IYL9	
Target: GPR65		Predicted MW.: 37 kDa
Immunogen: KLH conjugated synthetic peptide derived from human GPR65: 51-120/337. < Extracellular >		Subcellular Location: Cell membrane
Purification: affinity purified by Protein A		
Concentration: 1mg/ml		
Storage: 0.01M TBS (pH7.4) with 1% BSA, 0.02% Proclin300 and 50% Glycerol. Shipped at 4°C. Store at -20°C for one year. Avoid repeated freeze/thaw cycles.		
Background: GPR65 is a member of the G protein coupled receptor family. It has been reported in human in peripheral blood leukocytes, spleen, lymph node, and thymus. The ligand for this protein is psychosine. GPR65 may have a role in activation-induced cell death or differentiation of T cells.		

— VALIDATION IMAGES —

Sample: Lane 1: Lung (Mouse) Lysate at 40 ug
Lane 2: Cerebrum (Mouse) Lysate at 40 ug
Lane 3: Cerebrum (Rat) Lysate at 40 ug
Primary: Anti-GPR65 (bs-7668R) at 1/1000 dilution
Secondary: IRDye800CW Goat Anti-Rabbit IgG at 1/20000 dilution
Predicted band size: 40 kD
Observed band size: 44 kD

— SELECTED CITATIONS —

- **[IF=7.396]** Daichi Mori. et al. Extracellular acidity in tumor tissue upregulates programmed cell death protein 1 expression on tumor cells via proton-sensing G protein-coupled receptors. 2021 Sep 13 FCM ;mouse. 34460096
- **[IF=5.9]** Hanxu Zhou. et al. GPR65 is a novel immune biomarker and regulates the immune microenvironment in lung adenocarcinoma. FRONT IMMUNOL. 2025 May;16: IHC,WB ;Human. 40519919
- **[IF=5.193]** Bortell et al. Astrocyte-specific overexpressed gene signatures in response to methamphetamine exposure in vitro. (2017) J.Neuroinflammatio. 14:49 ICC,WB ;Rat. 28279172