

bs-6119R**[Primary Antibody]****ZNF185 Rabbit pAb****BioSS**
ANTIBODIES

www.bioss.com.cn

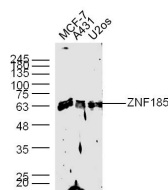
sales@bioss.com.cn

techsupport@bioss.com.cn

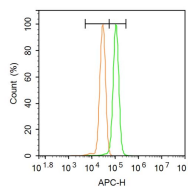
400-901-9800

— DATASHEET —

Host: Rabbit	Isotype: IgG	Applications: WB (1:500-2000) Flow-Cyt (3ug/Test)
Clonality: Polyclonal		Reactivity: Human (predicted: Mouse, Rat, Dog)
GeneID: 7739	SWISS: O15231	
Target: ZNF185		
Immunogen: KLH conjugated synthetic peptide derived from human ZNF185: 551-650/689.		
Purification: affinity purified by Protein A		
Concentration: 1mg/ml		
Storage: 0.01M TBS (pH7.4) with 1% BSA, 0.02% Proclin300 and 50% Glycerol. Shipped at 4°C. Store at -20°C for one year. Avoid repeated freeze/thaw cycles.		
Background: ZNF185 encodes a LIM domain zinc finger protein. It may be involved in the regulation of cellular proliferation and/or differentiation.		
		Predicted MW.: 76(human)/39(mo, kDa)
		Subcellular Location: Cell membrane ,Cytoplasm

— VALIDATION IMAGES —

Sample: MCF-7(Human) Cell Lysate at 40 ug
A431(Human) Cell Lysate at 40 ug U2os(Human)
Cell Lysate at 40 ug Primary: Anti-ZNF185
(bs-6119R) at 1/300 dilution Secondary:
IRDye800CW Goat Anti-Rabbit IgG at 1/20000
dilution Predicted band size: 76/39 kD Observed
band size: 67 kD



Blank control: A431. Primary Antibody (green line): Rabbit Anti-Phospho-c-Fos (Ser32) antibody (bs-6199R) Dilution: 1μg /10⁶ cells; Isotype Control Antibody (orange line): Rabbit IgG . Secondary Antibody : Goat anti-rabbit IgG-AF647 Dilution: 1μg /test. Protocol The cells were fixed with 4% PFA (10min at room temperature)and then permeabilized with 90% ice-cold methanol for 20 min at -20°C. The cells were then incubated in 5%BSA to block non-specific protein-protein interactions for 30 min at at room temperature .Cells stained with Primary Antibody for 30 min at room temperature. The secondary antibody used for 40 min at room temperature. Acquisition of 20,000 events was performed.