

RAB42 Rabbit pAb

Catalog Number: bs-21085R

Target Protein: RAB42

Concentration: 1mg/ml

Form: Liquid

Host: Rabbit

Clonality: Polyclonal

Isotype: IgG

Applications: Flow-Cyt (2ug/Test)

Reactivity: Human

Predicted MW: 11 kDa

Entrez Gene: 115273

Swiss Prot: Q8N4Z0

Source: KLH conjugated synthetic peptide derived from human RAB42: 31-105/105.

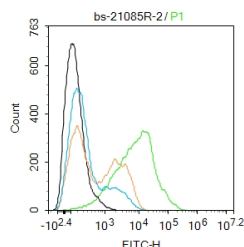
Purification: affinity purified by Protein A

Storage: Preservative: 0.02% Proclin300, Constituents: 1% BSA, 0.01M PBS, pH7.4.

Shipped at 4°C. Store at -20°C for one year. Avoid repeated freeze/thaw cycles.

Background: RAB42 (RAB42, Member RAS Oncogene Family) is a Protein Coding gene. Among its related pathways are RAB geranylgeranylation and Metabolism of proteins. GO annotations related to this gene include GTP binding and GTPase activity. An important paralog of this gene is RAB39B.

VALIDATION IMAGES



Blank control:THP-1. Primary Antibody (green line): Rabbit Anti-RAB42 antibody (bs-21085R) Dilution: 2μg /10⁶ cells; Isotype Control Antibody (orange line): Rabbit IgG . Secondary Antibody : Goat anti-rabbit IgG-FITC Dilution: 1μg /test. Protocol The cells were incubated in 5%BSA to block non-specific protein-protein interactions for 30 min at room temperature .Cells stained with Primary Antibody for 30 min at room temperature. The secondary antibody used for 40 min at room temperature. Acquisition of 20,000 events was performed.