

**bs-1213R****[ Primary Antibody ]**

**Bioss**  
ANTIBODIES

www.bioss.com.cn

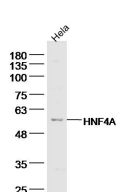
sales@bioss.com.cn

techsupport@bioss.com.cn

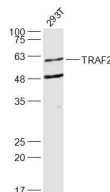
400-901-9800

**TRAF2 Rabbit pAb****— DATASHEET —**

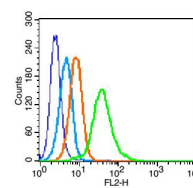
<b>Host:</b> Rabbit	<b>Isotype:</b> IgG	<b>Applications:</b> <b>WB</b> (1:500-2000) <b>Flow-Cyt</b> (1µg/Test)
<b>Clonality:</b> Polyclonal		
<b>GeneID:</b> 7186	<b>SWISS:</b> Q12933	<b>Reactivity:</b> Human (predicted: Mouse, Rat)
<b>Target:</b> TRAF2		
<b>Immunogen:</b> KLH conjugated synthetic peptide derived from human TRAF2: 401-501/501.		
<b>Purification:</b> affinity purified by Protein A		<b>Predicted MW.:</b> 56 kDa
<b>Concentration:</b> 1mg/ml		<b>Subcellular Location:</b> Cytoplasm
<b>Storage:</b> 0.01M TBS (pH7.4) with 1% BSA, 0.02% Proclin300 and 50% Glycerol. Shipped at 4°C. Store at -20°C for one year. Avoid repeated freeze/thaw cycles.		
<b>Background:</b> The induction of the various cellular responses mediated by tumor necrosis factor is initiated by its interaction with the TNFR1 and TNFR2 cell surface receptors. TRAF2 interacts with the cytoplasmic domain of TNFR2. TRAF2 is a common signal transducer for TNFR2 and CD40 that mediates activation of NF kappa B.		

**— VALIDATION IMAGES —**

Sample: Hela Cell (Human) Lysate at 40 ug  
Primary: Anti- TRAF2 (bs-1213R) at 1/300 dilution  
Secondary: IRDye800CW Goat Anti-Rabbit IgG at 1/20000 dilution Predicted band size: 56 kD  
Observed band size: 56 kD



Sample: 293T(Human) Cell Lysate at 30 ug  
Primary: Anti-TRAF2 (bs-1213R) at 1/1000 dilution Secondary: IRDye800CW Goat Anti-Rabbit IgG at 1/20000 dilution Predicted band size: 56 kD Observed band size: 56 kD



Blank control: U937(blue). Primary Antibody: Rabbit Anti-TRAF2 antibody(bs-1213R), Dilution: 1µg in 100 µL 1X PBS containing 0.5% BSA; Isotype Control Antibody: Rabbit IgG (orange), used under the same conditions. Secondary Antibody: Goat anti-rabbit IgG-PE(white blue), Dilution: 1:200 in 1 X PBS containing 0.5% BSA. Protocol The cells were fixed with 2% paraformaldehyde (10 min).Primary antibody (bs-1213R, 1µg /1x10<sup>6</sup> cells) were incubated for 30 min on the ice, followed by 1 X PBS containing 0.5% BSA + 10% goat serum (15 min) to block non-specific protein-protein interactions. Then the Goat Anti-rabbit IgG/PE antibody was added into the blocking buffer mentioned above to react with the primary antibody at 1/200 dilution for 30 min on ice. Acquisition of 20,000 events was performed.

**— SELECTED CITATIONS —**

- **[IF=6.69]** Wang and Liu The Membrane Protein of Severe Acute Respiratory Syndrome Coronavirus Functions as a Novel Cytosolic Pathogen-Associated Molecular Pattern To Promote Beta Interferon Induction via a Toll-Like-Receptor-Related TRAF3-Independent Mechanism. (2016) MBio. 7:e01872-15 WB ;Human. 26861016
- **[IF=2.61]** Lei, Mingxing, et al. "Gsdma3 is a new factor needed for TNF-α-mediated apoptosis signal pathway in mouse

Important Note: This product as supplied is intended for research use only, not for use in human, therapeutic or diagnostic applications.

skin keratinocytes." Histochemistry and Cell Biology 138.3 (2012): 385-396. IHC ;="Mouse". 22585037