

**bs-60162R**

**[ Primary Antibody ]**

## Mono-Methyl-Histone H2B (Lys12) Rabbit pAb

**BioSS**  
ANTIBODIES

www.bioss.com.cn

sales@bioss.com.cn

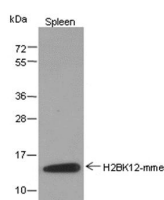
techsupport@bioss.com.cn

400-901-9800

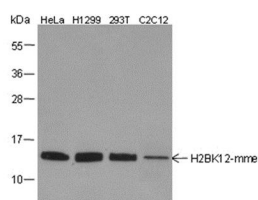
### — DATASHEET —

<b>Host:</b> Rabbit	<b>Isotype:</b> IgG	<b>Applications:</b> WB (1:500-1:2000)
<b>Clonality:</b> Polyclonal		<b>Reactivity:</b> Human, Mouse (predicted: Rat)
<b>Target:</b> Mono-Methyl-Histone H2B (Lys12)		
<b>Purification:</b> Antigen affinity purification		
<b>Concentration:</b> 1mg/ml		<b>Predicted MW.:</b> 14 kDa
<b>Storage:</b> 0.01M TBS (pH7.4) with 1% BSA, 0.02% Proclin300 and 50% Glycerol. Shipped at 4°C. Store at -20°C for one year. Avoid repeated freeze/thaw cycles.		<b>Subcellular Location:</b> Nucleus

### — VALIDATION IMAGES —



Blocking buffer: 5% NFDM/TBST Primary ab  
dilution: 1:2000 Primary ab incubation  
condition: 2 hours at room temperature  
Secondary ab: Goat Anti-Rabbit IgG H&L (HRP)  
Lysate: Mouse spleen Protein loading quantity:  
20 µg Exposure time: 60 s Predicted MW: 14 kDa  
Observed MW: 14 kDa



Blocking buffer: 5% NFDM/TBST Primary ab  
dilution: 1:2000 Primary ab incubation  
condition: 2 hours at room temperature  
Secondary ab: Goat Anti-Rabbit IgG H&L (HRP)  
Lysate: HeLa, H1299, 293T, C2C12 Protein  
loading quantity: 20 µg Exposure time: 60 s  
Predicted MW: 14 kDa Observed MW: 14 kDa