

**bs-60168R**

**[ Primary Antibody ]**

## Butyryl-Histone H2B (Lys5) Rabbit pAb

**Bioss**  
ANTIBODIES

www.bioss.com.cn

sales@bioss.com.cn

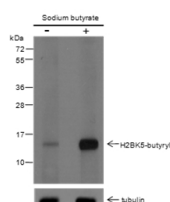
techsupport@bioss.com.cn

400-901-9800

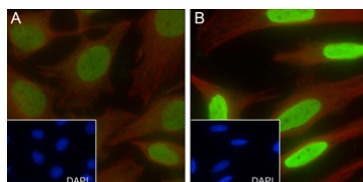
### — DATASHEET —

<b>Host:</b> Rabbit	<b>Isotype:</b> IgG	<b>Applications:</b> WB (1:500-1:2000) ICC/IF (1:50)
<b>Clonality:</b> Polyclonal		<b>Reactivity:</b> Human (predicted: Mouse, Rat)
<b>Target:</b> Butyryl-Histone H2B (Lys5)		<b>Subcellular Location:</b> Nucleus
<b>Purification:</b> Antigen affinity purification		
<b>Concentration:</b> 1mg/ml		
<b>Storage:</b> 0.01M TBS (pH7.4) with 1% BSA, 0.02% Proclin300 and 50% Glycerol. Shipped at 4°C. Store at -20°C for one year. Avoid repeated freeze/thaw cycles.		

### — VALIDATION IMAGES —



Blocking buffer: 5% NFDM/TBST Primary ab dilution: 1:2000 Primary ab incubation condition: 2 hours at room temperature Secondary ab: Goat Anti-Rabbit IgG H&L (HRP) Lysate: (-) HeLa, (+) HeLa+Sodium butyrate (30mM, 4hr) Protein loading quantity: 20 µg Exposure time: 60 s Predicted MW: 14 kDa Observed MW: 14 kDa



Cell line: (A) HeLa, (B) HeLa+SBA (5mM, 24hr) Fixative: 100% Ice-cold methanol Permeabilization: 0.1% TritonX-100 Primary ab dilution: 1:50 Primary incubation condition: 4°C overnight Secondary ab: Goat Anti-Rabbit IgG Nuclear counter stain: DAPI (Blue) Counter stain: Tubulin (Red) Comment: Color green is the positive signal for bs-60168R