

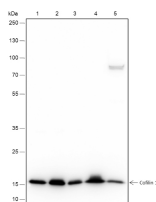
bsm-60604R**[Primary Antibody]****BioSS**
ANTIBODIES

www.bioss.com.cn

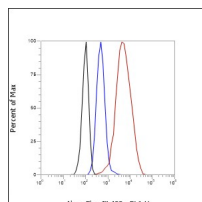
sales@bioss.com.cn

techsupport@bioss.com.cn

400-901-9800

Cofilin 1 Recombinant Rabbit mAb**— DATASHEET —****Host:** Rabbit**Isotype:** IgG**Clonality:** Recombinant**CloneNo.:** C5E4**Target:** Cofilin 1**Purification:** affinity purified by Protein A**Concentration:** 1mg/ml**Storage:** 0.01M TBS (pH7.4) with 1% BSA, 0.02% Proclin300 and 50% Glycerol.
Shipped at 4°C. Store at -20°C for one year. Avoid repeated freeze/thaw cycles.**Background:** The protein encoded by this gene can polymerize and depolymerize F-actin and G-actin in a pH-dependent manner. Increased phosphorylation of this protein by LIM kinase aids in Rho-induced reorganization of the actin cytoskeleton. Cofilin is a widely distributed intracellular actin-modulating protein that binds and depolymerizes filamentous F-actin and inhibits the polymerization of monomeric G-actin in a pH-dependent manner. It is involved in the translocation of actin-cofilin complex from cytoplasm to nucleus.**Applications:** WB (1:500-2000)**Flow-Cyt** (1:20-100)**Reactivity:** Human (predicted: Mouse, Rat)**Subcellular** Cell membrane ,Cytoplasm**Location:** ,Nucleus**— VALIDATION IMAGES —**

Blocking buffer: 5% NFDM/TBST Primary ab
dilution: 1:2000 Primary ab incubation
condition: 2 hours at room temperature
Secondary ab: Goat Anti-Rabbit IgG H&L (HRP)
Lysate: 1: HeLa, 2: MCF-7, 3: 293T, 4: C6,5:
NIH/3T3 Protein loading quantity: 20 µg
Exposure time: 3 s Predicted MW: 19 kDa
Observed MW: 19 kDa



Cell line: HeLa Fixation: 4% Paraformaldehyde
Permeabilization: 90% Methanol Primary Ab
dilution: 1:100 Secondary Ab: Goat Anti-Rabbit
IgG Unlabelled control: The cell without
incubation with primary antibody and secondary
antibody (Black line). Isotype control: Rabbit
monoclonal IgG (Blue line). Comment: Line red is
the positive signal for bsm-60604R