

**bsm-60543R****[ Primary Antibody ]****BioSS**  
ANTIBODIES

www.bioss.com.cn

sales@bioss.com.cn

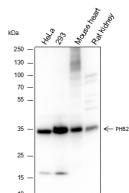
techsupport@bioss.com.cn

400-901-9800

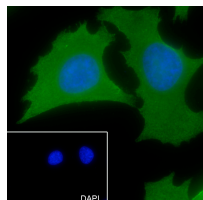
**PHB2 Recombinant Rabbit mAb****— DATASHEET —****Host:** Rabbit**Isotype:** IgG/Kappa**Clonality:** Recombinant**CloneNo.:** F5G8**Target:** PHB2**Purification:** affinity purified by Protein A**Concentration:** 1mg/ml**Storage:** 0.01M TBS (pH7.4) with 1% BSA, 0.02% Proclin300 and 50% Glycerol.

Shipped at 4°C. Store at -20°C for one year. Avoid repeated freeze/thaw cycles.

**Background:** Enables several functions, including protein C-terminus binding activity; protein N-terminus binding activity; and protein dimerization activity. Involved in several processes, including defense response to virus; positive regulation of cell cycle phase transition; and regulation of transcription, DNA-templated. Located in several cellular components, including cell surface; mitochondrial membrane; and nuclear matrix. Part of mitochondrial prohibitin complex. [provided by Alliance of Genome Resources, Apr 2022]

**Applications:** WB (1:2000-1:10000)  
ICC/IF (1:50)**Reactivity:** Human (predicted: Mouse, Rat)**Subcellular Location:** Cell membrane ,Cytoplasm ,Nucleus**— VALIDATION IMAGES —**

Blocking buffer: 5% NFDM/TBST Primary ab dilution: 1:10000 Primary ab incubation condition: 2 hours at room temperature Secondary ab: Goat Anti-Rabbit IgG H&L (HRP) Lysate: HeLa, 293, Mouse heart, Rat kidney Protein loading quantity: 20 µg Exposure time: 30 s Predicted MW: 33 kDa Observed MW: 33 kDa



Cell line: HeLa Fixative: 100% Ice-cold methanol Permeabilization: 0.1% TritonX-100 Primary ab dilution: 1:50 Primary incubation condition: 4°C overnight Secondary ab: Goat Anti-Rabbit IgG Nuclear counter stain: DAPI (Blue) Comment: Color green is the positive signal for bsm-60543R