

bs-7110R

[Primary Antibody]

DOCK1 Rabbit pAb

Bioss
ANTIBODIES

www.bioss.com.cn

sales@bioss.com.cn

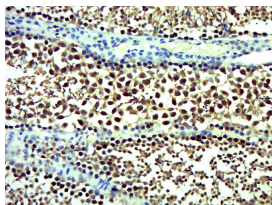
techsupport@bioss.com.cn

400-901-9800

— DATASHEET —

Host: Rabbit	Isotype: IgG	Applications: IHC-P (1:100-500) IHC-F (1:100-500) IF (1:100-500) Reactivity: Mouse (predicted: Human, Rat, Sheep, Cow, Chicken, Dog, Horse) Predicted MW.: 215 kDa Subcellular Location: Cell membrane ,Cytoplasm
Clonality: Polyclonal		
GeneID: 1793	SWISS: Q14185	
Target: DOCK1		
Immunogen: KLH conjugated synthetic peptide derived from human DOCK1: 465-550/1865.		
Purification: affinity purified by Protein A		
Concentration: 1mg/ml		
Storage: 0.01M TBS (pH7.4) with 1% BSA, 0.02% Proclin300 and 50% Glycerol. Shipped at 4°C. Store at -20°C for one year. Avoid repeated freeze/thaw cycles.		
Background: Involved in cytoskeletal rearrangements required for phagocytosis of apoptotic cells and cell motility. Functions as a guanine nucleotide exchange factor (GEF), which activates Rac Rho small GTPases by exchanging bound GDP for free GTP. Its GEF activity may be enhanced by ELMO1. Tissue specificity: Highly expressed in placenta, lung, kidney, pancreas and ovary. Expressed at intermediate level in thymus, testes and colon.		

— VALIDATION IMAGES —



Paraformaldehyde-fixed, paraffin embedded (Mouse testis); Antigen retrieval by boiling in sodium citrate buffer (pH6.0) for 15min; Block endogenous peroxidase by 3% hydrogen peroxide for 20 minutes; Blocking buffer (normal goat serum) at 37°C for 30min; Antibody incubation with (DOCK1) Polyclonal Antibody, Unconjugated (bs-7110R) at 1:500 overnight at 4°C, followed by a conjugated secondary (sp-0023) for 20 minutes and DAB staining.