

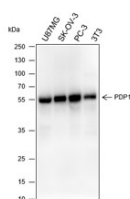
bsm-60565R**[Primary Antibody]****BioSS**
ANTIBODIES

www.bioss.com.cn

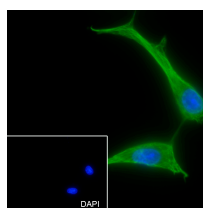
sales@bioss.com.cn

techsupport@bioss.com.cn

400-901-9800

PDP1 Recombinant Rabbit mAb**— DATASHEET —****Host:** Rabbit**Isotype:** IgG/Kappa**Clonality:** Recombinant**CloneNo.:** F12B3**Target:** PDP1**Purification:** affinity purified by Protein A**Concentration:** 1mg/ml**Storage:** 0.01M TBS (pH7.4) with 1% BSA, 0.02% Proclin300 and 50% Glycerol.
Shipped at 4°C. Store at -20°C for one year. Avoid repeated freeze/thaw cycles.**Background:** PPM2C is a protein similar to members of the protein phosphatase 2C (PP2C) family. It is a catalytic subunit of the mitochondrial matrix phosphatase and is involved in reactivation of the pyruvate dehydrogenase complex.**Applications:** **WB** (1:500-1:1000)
ICC/IF (1:50)**Reactivity:** Human (predicted: Mouse, Rat)**Subcellular Location:** Cytoplasm**— VALIDATION IMAGES —**

Blocking buffer: 5% NFDM/TBST Primary ab dilution: 1:1000 Primary ab incubation condition: 2 hours at room temperature
Secondary ab: Goat Anti-Rabbit IgG H&L (HRP)
Lysate: U87MG, SK-OV-3, PC-3, 3T3 Protein loading quantity: 20 µg Exposure time: 60 s
Predicted MW: 55 kDa Observed MW: 55 kDa



Cell line: U87-MG Fixative: 100% Ice-cold methanol Permeabilization: 0.1% TritonX-100
Primary ab dilution: 1:50 Primary incubation condition: 4°C overnight Secondary ab: Goat Anti-Rabbit IgG Nuclear counter stain: DAPI (Blue) Comment: Color green is the positive signal for bsm-60565R