

**bs-13451R****[ Primary Antibody ]****GLYR1 Rabbit pAb****Bioss**  
**ANTIBODIES**

www.bioss.com.cn

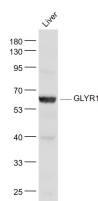
sales@bioss.com.cn

techsupport@bioss.com.cn

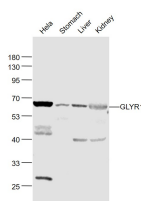
400-901-9800

**— DATASHEET —**

<b>Host:</b> Rabbit	<b>Isotype:</b> IgG	<b>Applications:</b> WB (1:500-2000)
<b>Clonality:</b> Polyclonal		<b>Reactivity:</b> Human, Mouse (predicted: Rat, Pig, Cow, Chicken, Dog, Horse, Monkey)
<b>GeneID:</b> 84656	<b>SWISS:</b> Q49A26	<b>Predicted MW.:</b> 61 kDa
<b>Target:</b> GLYR1		<b>Subcellular Location:</b> Nucleus
<b>Immunogen:</b> KLH conjugated synthetic peptide derived from human GLYR1/NP60: 21-120/553.		
<b>Purification:</b> affinity purified by Protein A		
<b>Concentration:</b> 1mg/ml		
<b>Storage:</b> 0.01M TBS (pH7.4) with 1% BSA, 0.02% Proclin300 and 50% Glycerol. Shipped at 4°C. Store at -20°C for one year. Avoid repeated freeze/thaw cycles.		
<b>Background:</b> NP60 is a 553 amino acid nuclear protein that regulates the phosphorylation and activation of p38 alpha in response to stress. There are five isoforms of NP60 that are produced as a result of alternative splicing events.		

**— VALIDATION IMAGES —**

Sample: Liver (Mouse) Lysate at 40 ug Primary:  
Anti- GLYR1 (bs-13451R) at 1/1000 dilution  
Secondary: IRDye800CW Goat Anti-Rabbit IgG at  
1/20000 dilution Predicted band size: 61 kD  
Observed band size: 61 kD



Sample: HeLa(Human) Cell Lysate at 30 ug  
Stomach (Mouse) Lysate at 40 ug Liver (Mouse)  
Lysate at 40 ug Kidney (Mouse) Lysate at 40 ug  
Primary: Anti- GLYR1 (bs-13451R) at 1/1000  
dilution Secondary: IRDye800CW Goat Anti-  
Rabbit IgG at 1/20000 dilution Predicted band  
size: 61 kD Observed band size: 61 kD