

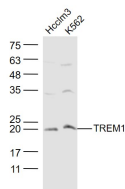
**bs-10306R****[ Primary Antibody ]****Bioss**  
ANTIBODIES

www.bioss.com.cn

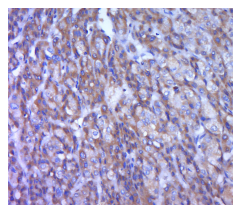
sales@bioss.com.cn

techsupport@bioss.com.cn

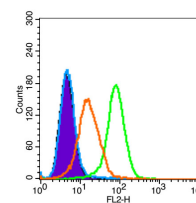
400-901-9800

**TREM1 Rabbit pAb****— DATASHEET —****Host:** Rabbit**Isotype:** IgG**Clonality:** Polyclonal**GeneID:** 54210**SWISS:** Q9NP99**Target:** TREM1**Immunogen:** KLH conjugated synthetic peptide derived from human TREM1: 151-234/234. < Extracellular >**Purification:** affinity purified by Protein A**Concentration:** 1mg/ml**Storage:** 0.01M TBS (pH7.4) with 1% BSA, 0.02% Proclin300 and 50% Glycerol.  
Shipped at 4°C. Store at -20°C for one year. Avoid repeated freeze/thaw cycles.**Background:** This gene encodes a receptor belonging to the Ig superfamily that is expressed on myeloid cells. This protein amplifies neutrophil and monocyte-mediated inflammatory responses triggered by bacterial and fungal infections by stimulating release of pro-inflammatory chemokines and cytokines, as well as increased surface expression of cell activation markers. Alternatively spliced transcript variants encoding different isoforms have been noted for this gene.[provided by RefSeq, Jun 2011].**Applications:** WB (1:500-2000)**IHC-P** (1:100-500)**IHC-F** (1:100-500)**IF** (1:100-500)**Flow-Cyt** (1µg/Test)**Reactivity:** Human, Rat**Predicted  
MW.:** 24 kDa**Subcellular  
Location:** Secreted ,Cell membrane**— VALIDATION IMAGES —**

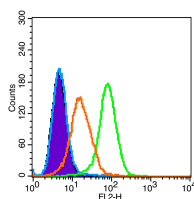
Sample: hcclm3(Human) Cell Lysate at 30 ug  
K562(Human) Cell Lysate at 30 ug Primary: Anti-TREM1 (bs-10306R) at 1/300 dilution Secondary: IRDye800CW Goat Anti-Rabbit IgG at 1/20000 dilution Predicted band size: 24 kD Observed band size: 21 kD



Paraformaldehyde-fixed, paraffin embedded (human liver carcinoma); Antigen retrieval by boiling in sodium citrate buffer (pH6.0) for 15min; Block endogenous peroxidase by 3% hydrogen peroxide for 20 minutes; Blocking buffer (normal goat serum) at 37°C for 30min; Antibody incubation with (TREM1) Polyclonal Antibody, Unconjugated (bs-10306R) at 1:400 overnight at 4°C, followed by a conjugated secondary (sp-0023) for 20 minutes and DAB staining.



Primary Antibody: Rabbit anti-TREM1 antibody  
Supplier catalog number: bs-10306R Supplier: Bioss Isotype Control Antibody: Rabbit IgG  
Secondary Antibody: F(ab')<sub>2</sub> fragment goat anti-rabbit IgG-PE Supplier: Jackson Lab.  
Positive control: U937(4% paraformaldehyde for 10 min at room temperature)



Primary Antibody: Rabbit anti-TREM1 antibody  
Supplier catalog number: bs-10306R Supplier: Bioss Isotype Control Antibody: Rabbit IgG  
Secondary Antibody: F(ab')<sub>2</sub> fragment goat anti-rabbit IgG-PE Supplier: Jackson Lab.  
Positive control: U937(4% paraformaldehyde for

Important Note: This product as supplied is intended for research use only, not for use in human, therapeutic or diagnostic applications.

10 min at room temperature)

## — SELECTED CITATIONS —

---

- **[IF=4.691]** Xin-Gang Sun. et al. Role of TREM-1 in the development of early brain injury after subarachnoid hemorrhage. Exp Neurol. 2021 Mar;;113692 WB,IF,IHC ;Rat. 33727099