

**bs-0385R****[ Primary Antibody ]****ARC Rabbit pAb****Bioss**  
**ANTIBODIES**

www.bioss.com.cn

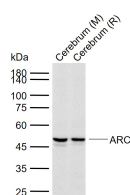
sales@bioss.com.cn

techsupport@bioss.com.cn

400-901-9800

**— DATASHEET —**

|  |   |  |
|--|---|--|
| <b>Host:</b> Rabbit<br><b>Clonality:</b> Polyclonal<br><b>GeneID:</b> 23237<br><b>Target:</b> ARC<br><b>Immunogen:</b> KLH conjugated synthetic peptide derived from human ARC: 101-200/396.<br><b>Purification:</b> affinity purified by Protein A<br><b>Concentration:</b> 1mg/ml<br><b>Storage:</b> 0.01M TBS (pH7.4) with 1% BSA, 0.02% Proclin300 and 50% Glycerol.<br>Shipped at 4°C. Store at -20°C for one year. Avoid repeated freeze/thaw cycles.<br><b>Background:</b> Activity-regulated cytoskeleton-associated protein (ARC) in the brain and learning and memory, researchers believe: ARC protein is by strengthening the function of synaptic links in order to save the memory, including learning and memory and emotion. At present, the scientists will also Activity-regulated cytoskeleton-associated protein used to take drugs addiction. | <b>Isotype:</b> IgG<br><b>SWISS:</b> Q7LC44 | <b>Applications:</b> <b>WB</b> (1:500-2000)<br><b>ELISA</b> (1:5000-10000)<br><b>Reactivity:</b> Mouse, Rat<br>(predicted: Human, Cow, Horse)<br><b>Predicted MW.:</b> 45 kDa<br><b>Subcellular Location:</b> Cell membrane ,Cytoplasm |
|--|---|--|

**— VALIDATION IMAGES —**

Sample: Lane 1: Mouse Cerebrum tissue lysates

Lane 2: Rat Cerebrum tissue lysates Primary:

Anti-ARC (bs-0385R) at 1/1000 dilution

Secondary: IRDye800CW Goat Anti-Rabbit IgG at

1/20000 dilution Predicted band size: 45 kDa

Observed band size: 48 kDa

**— SELECTED CITATIONS —**

- **[IF=3.4]** Ru-Meng Wei. et al. Melatonin attenuates intermittent hypoxia-induced cognitive impairment in aged mice: The role of inflammation and synaptic plasticity. PSYCHONEUROENDOCRINO. 2025 Jan;171:107210 WB ;Mouse. 39378690
- **[IF=2.6]** Xun He. et al. Resveratrol Alleviates the Prenatally Intermittent Hypoxia-Induced Cognitive Impairment in Male Offspring Mice Through Modulating the SIRT1/HIF-1 $\alpha$  Pathway..Brain and Behavior.2025 Mar;15(3):e70413. Western blot ;Mouse. 40084394