

**[ Primary Antibody ]**

## Apelin Receptor Rabbit pAb



**BioSS**  
ANTIBODIES

www.bioss.com.cn

sales@bioass.com.cn

techsupport@bioss.com.cn

400-901-9800

## — DATASHEET

**Host:** Rabbit

**Isotype:** IgG

**Applications: WB (1:500-2000)**

**Clonality:** Polyclonal

**GeneID:** 187

**SWISS:** P35414

**Target:** Apelin Receptor

**Immunogen:** KLH conjugated synthetic peptide derived from human Apelin receptor: 41-140/380.

**Purification:** affinity purified by Protein A

**Concentration:** 1mg/ml

**Storage:** 0.01M TBS (pH7.4) with 1% BSA, 0.02% Proclin300 and 50% Glycerol.

Shipped at 4°C. Store at -20°C for one year. Avoid repeated freeze/thaw cycles.

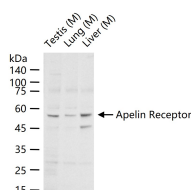
**Background:** This gene encodes a member of the G protein-coupled receptor gene family. The encoded protein is related to the angiotensin receptor, but is actually an apelin receptor that inhibits adenylate cyclase activity and plays a counter-regulatory role against the pressure action of angiotensin II by exerting hypertensive effect. It functions in the cardiovascular and central nervous systems, in glucose metabolism, in embryonic and tumor angiogenesis and as a human immunodeficiency virus (HIV-1) coreceptor. Two transcript variants resulting from alternative splicing have been identified. [provided by RefSeq

**Reactivity:** Mouse

**Predicted MW.:** 42 kDa

**Subcellular Location:** Cell membrane

— VALIDATION IMAGES



25 ug total protein per lane of various lysates (see on figure) probed with Apelin Receptor polyclonal antibody, unconjugated (bs-2430R) at 1:1000 dilution and 4°C overnight incubation. Followed by conjugated secondary antibody incubation at r.t. for 60 min.

## — SELECTED CITATIONS

- **[IF=3.968]** Bingyuan Ji et al. Roles for heterodimerization of APJ and B2R in promoting cell proliferation via ERK1/2-eNOS signaling pathway. *Cell Signal.* 2020 Sep;73:109671. **CoIP ;Human.** 32407761
- **[IF=2.976]** Cemre Nur Balci. et al. The investigation of apelin and apelin receptor expressions in mouse endometrium during peri-implantation period. *ANN ANAT.* 2023 Feb;246:152027 **WB,IHC ;Mouse.** 36379349
- **[IF=1.61]** Ustunel, Ismail, et al. "The effects of water immersion and restraint stress on the expressions of apelin, apelin receptor (APJR) and apoptosis rate in the rat heart." *Acta Histochemica* (2014) **IHC ;="Rat".** 24411164
- **[IF=1.64]** Izgüt-Uysal, V. N., et al. "The effect of apelin on the functions of peritoneal macrophages." *Physiological research* (2017). **IHC ;="Rat".** 28248533

Important Note: This product as supplied is intended for research use only, not for use in human, therapeutic or diagnostic applications.