

**bs-2425R****[ Primary Antibody ]****Bioss**  
**ANTIBODIES**

www.bioss.com.cn

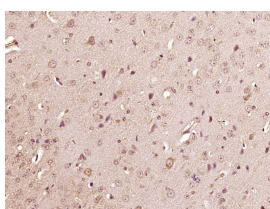
sales@bioss.com.cn

techsupport@bioss.com.cn

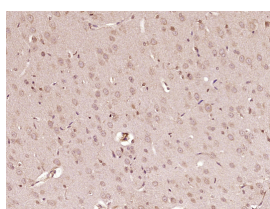
400-901-9800

**Apelin Rabbit pAb****— DATASHEET —**

<b>Host:</b> Rabbit	<b>Isotype:</b> IgG	<b>Applications:</b> IHC-P (1:100-500)
<b>Clonality:</b> Polyclonal		<b>IHC-F</b> (1:100-500)
<b>GeneID:</b> 8862	<b>SWISS:</b> Q9ULZ1	<b>IF</b> (1:100-500)
<b>Target:</b> Apelin		<b>Reactivity:</b> Human, Mouse, Rat
<b>Immunogen:</b> KLH conjugated synthetic peptide derived from human Apelin: 65-77/77.		
<b>Purification:</b> affinity purified by Protein A		<b>Predicted MW.:</b> 10 kDa
<b>Concentration:</b> 1mg/ml		<b>Subcellular Location:</b> Secreted
<b>Storage:</b> 0.01M TBS (pH7.4) with 1% BSA, 0.02% Proclin300 and 50% Glycerol. Shipped at 4°C. Store at -20°C for one year. Avoid repeated freeze/thaw cycles.		
<b>Background:</b> Apelin (also known as APLN) is a peptide that in humans is encoded by the APLN gene. Apelin is the endogenous ligand for the G-protein-coupled APJ receptor that is expressed at the surface of some cell types. It is widely expressed in various organs such as the heart, lung, kidney, liver, adipose tissue, gastrointestinal tract, brain, adrenal glands, endothelium, and human plasma.		

**— VALIDATION IMAGES —**

Paraformaldehyde-fixed, paraffin embedded (Mouse brain); Antigen retrieval by boiling in sodium citrate buffer (pH6.0) for 15min; Block endogenous peroxidase by 3% hydrogen peroxide for 20 minutes; Blocking buffer (normal goat serum) at 37°C for 30min; Antibody incubation with (Apelin) Polyclonal Antibody, Unconjugated (bs-2425R) at 1:400 overnight at 4°C, followed by operating according to SP Kit(Rabbit) (sp-0023) instructions and DAB staining.



Paraformaldehyde-fixed, paraffin embedded (Rat brain); Antigen retrieval by boiling in sodium citrate buffer (pH6.0) for 15min; Block endogenous peroxidase by 3% hydrogen peroxide for 20 minutes; Blocking buffer (normal goat serum) at 37°C for 30min; Antibody incubation with (Apelin) Polyclonal Antibody, Unconjugated (bs-2425R) at 1:400 overnight at 4°C, followed by operating according to SP Kit(Rabbit) (sp-0023) instructions and DAB staining.

**— SELECTED CITATIONS —**

- **[IF=4.414]** Chen, Bin. et al. Apelin-13 Improves Cognitive Impairment and Repairs Hippocampal Neuronal Damage by Activating PGC-1α/PPARγ Signaling. NEUROCHEM RES. 2022 Dec;1-12 IHC ;Mouse. 36512295
- **[IF=2.915]** Bülbül M et al. Acute restraint stress induces cholecystokinin release via enteric apelin.(2018) Neuropeptides. IF ;Rat. 30503693
- **[IF=2.976]** Cemre Nur Balci. et al. The investigation of apelin and apelin receptor expressions in mouse endometrium during peri-implantation period. ANN ANAT. 2023 Feb;246:152027 WB,IHC ;Mouse. 36379349
- **[IF=1.812]** Kasacka et al. Comparative evaluation of cannabinoid receptors, apelin and S100A6 protein in the heart of women of different age groups. (2018) BMC.Cardiovasc.Disord. 18:190 IHC ;Human. 30286717

Important Note: This product as supplied is intended for research use only, not for use in human, therapeutic or diagnostic applications.