

bs-2101R**[Primary Antibody]****BioSS**
ANTIBODIES

www.bioss.com.cn

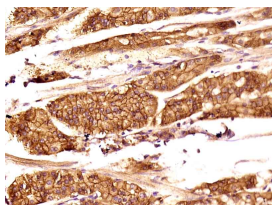
sales@bioss.com.cn

techsupport@bioss.com.cn

400-901-9800

TEM1 Rabbit pAb**— DATASHEET —**

Host: Rabbit Clonality: Polyclonal GeneID: 57124 Target: TEM1 Immunogen: KLH conjugated synthetic peptide derived from human TEM 1: 251-350/757. < Extracellular > Purification: affinity purified by Protein A Concentration: 1mg/ml Storage: 0.01M TBS (pH7.4) with 1% BSA, 0.02% Proclin300 and 50% Glycerol. Shipped at 4°C. Store at -20°C for one year. Avoid repeated freeze/thaw cycles. Background: The transmembrane glycoprotein Tumor endothelial marker 1 (TEM1) is highly expressed in tumor endothelial cells however it is barely detectable on normal endothelial cells. It is believed to play a role in tumor angiogenesis. It is expressed in stromal fibroblasts, metastatic hepatic lesions and during angiogenesis of corpus luteum formation and wound healing. TEM1 is being investigated as a potential target for cancer treatment.	Isotype: IgG SWISS: Q9HCU0	Applications: IHC-P (1:100-500) IHC-F (1:100-500) IF (1:100-500) Reactivity: Human (predicted: Mouse, Rat, Pig, Cow, Dog, Horse) Predicted MW.: 80 kDa Subcellular Location: Cell membrane
--	---	---

— VALIDATION IMAGES —

Paraformaldehyde-fixed, paraffin embedded (Human stomach carcinoma); Antigen retrieval by boiling in sodium citrate buffer (pH6.0) for 15min; Block endogenous peroxidase by 3% hydrogen peroxide for 20 minutes; Blocking buffer (normal goat serum) at 37°C for 30min; Antibody incubation with (TEM1) Polyclonal Antibody, Unconjugated (bs-2101R) at 1:400 overnight at 4°C, followed by operating according to SP Kit(Rabbit) (sp-0023) instructions and DAB staining.

— SELECTED CITATIONS —

- **[IF=7.919]** Tao Xu. et al. CD248 as a novel therapeutic target in pulmonary arterial hypertension. Clin Transl Med. 2020 Sep;10(5):e175 FCM ;Rat. 32997414
- **[IF=2.19]** Taguchi K et al. Isolation of tumor endothelial cells from murine cancer. (2018) Journal of Immunological Methods. Nov 3. IF ;MOUSE. 30395818