

CALCA Mouse mAb

Catalog Number: bsm-51512M

Target Protein: CALCA

Concentration: 1mg/ml

Form: Liquid

Host: Mouse

Clonality: Monoclonal

Clone No.: G8D24

Isotype: IgM

Applications: WB (1:500-2000)

Reactivity: Human

Predicted MW: 2/13 kDa

Entrez Gene: 796

Swiss Prot: P01258

Source: KLH conjugated synthetic peptide derived from human CALCA: 51-130/141.

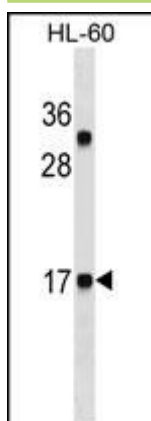
Purification: affinity purified by Protein G

Storage: 0.01M TBS (pH7.4) with 1% BSA, 0.02% Proclin300 and 50% Glycerol.

Shipped at 4°C. Store at -20°C for one year. Avoid repeated freeze/thaw cycles.

Background: Procalcitonin (PCT) is a peptide precursor of the hormone calcitonin, the latter being involved with calcium homeostasis. It arises once preprocalcitonin is cleaved by endopeptidase. It is composed of 116 amino acids and is produced by parafollicular cells (C cells) of the thyroid and by the neuroendocrine cells of the lung and the intestine.

VALIDATION IMAGES



Sample: Lane 1: HL60 cell lysates Primary: Anti-CALCA (bsm-51512M) at 1/1000 dilution Secondary: IRDye800CW Goat Anti-Mouse IgG at 1/20000 dilution Predicted band size: 2/13 kD Observed band size: 17 kD