

bsm-60908R**[Primary Antibody]**

Human IgD Recombinant Rabbit mAb

BioSS
ANTIBODIES

www.bioss.com.cn

sales@bioss.com.cn

techsupport@bioss.com.cn

400-901-9800

— DATASHEET —

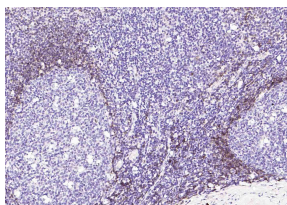
Host: Rabbit**Clonality:** Recombinant**CloneNo.:** 20D14**Target:** Human IgD**Purification:** affinity purified by Protein A**Concentration:** 1mg/ml**Storage:** 0.01M TBS(pH7.4) with 1% BSA, 0.02% Proclin300 and 50% Glycerol.
Shipped at 4°C. Store at -20 °C for one year. Avoid repeated freeze/thaw cycles.**Background:** Ig delta chain C region is an allelic product of the human IGHD gene. The two known IGHD alleles, IGHD*01 and IGHD*02, respectively produce isoforms 1, a secreted protein, and 2, a single-pass type I membrane protein. A member of the adaptive immune system, IgD antibodies are monomers expressed by activated B cells. Containing 3 Ig-like (immunoglobulin-like) domains, IgD chain C is located on chromosome 14 within the human heavy chain locus, lying on the 3' side of the IgM chain C region from the V-D-J cassette. Polyadenylation at certain sites along the heavy chain locus likely effects the mechanism that determines the alternative splicing event which results in the expression of either IgD chain C or IgM chain C. Some studies have suggested that antigenic coactivation of IgD+ B cells can have a negative influence on bone resorption during infectious events.**Applications:** IHC-P (1:50-200)

IHC-F (1:50-200)

IF (1:50-200)

Reactivity: Human**Predicted
MW.:** 42 kDa**Subcellular
Location:** Secreted ,Cell membrane

— VALIDATION IMAGES —



Paraformaldehyde-fixed, paraffin embedded (human tonsil); Antigen retrieval by boiling in sodium citrate buffer (pH6.0) for 15min; Block endogenous peroxidase by 3% hydrogen peroxide for 20 minutes; Blocking buffer (normal goat serum) at 37°C for 30min; Incubation with (Human IgD) Monoclonal Antibody, Unconjugated (bsm-60908R) at 1:50 overnight at 4°C, followed by operating according to SP Kit(Rabbit) (sp-0023) instructions and DAB staining.