

bs-7637R**[Primary Antibody]****ICAM4 Rabbit pAb****BioSS**
ANTIBODIES

www.bioss.com.cn

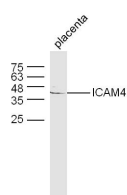
sales@bioss.com.cn

techsupport@bioss.com.cn

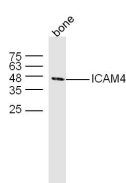
400-901-9800

— DATASHEET —

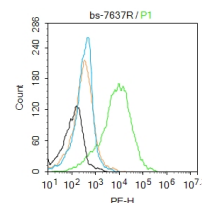
Host: Rabbit	Isotype: IgG	Applications: WB (1:500-2000) Flow-Cyt (1ug/test)
Clonality: Polyclonal		
GeneID: 3386	SWISS: Q14773	Reactivity: Human, Mouse (predicted: Rat, Pig, Cow, Dog, Horse)
Target: ICAM4		
Immunogen: KLH conjugated synthetic peptide derived from human ICAM4: 85-180/271. < Extracellular >		
Purification: affinity purified by Protein A		Predicted MW.: 27 kDa
Concentration: 1mg/ml		Subcellular Location: Secreted ,Cell membrane
Storage: 0.01M TBS (pH7.4) with 1% BSA, 0.02% Proclin300 and 50% Glycerol. Shipped at 4°C. Store at -20°C for one year. Avoid repeated freeze/thaw cycles.		
Background: ICAM proteins are ligands for the leukocyte adhesion protein LFA-1 (integrin alpha-L/beta-2). ICAM4 is also a ligand for alpha-4/beta-1 and alpha-V integrins.		

— VALIDATION IMAGES —

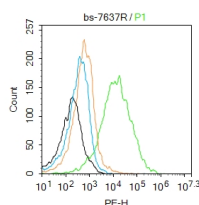
Sample: placenta(Mouse) Lysate at 40 ug
 Primary: Anti-ICAM4 (bs-7637R) at 1/300 dilution
 Secondary: IRDye800CW Goat Anti-Rabbit IgG at
 1/20000 dilution Predicted band size: 27 kD
 Observed band size: 45 kD



Sample: Bone (Mouse) Lysate at 40 ug Primary:
 Anti-ICAM4 (bs-7637R) at 1/300 dilution
 Secondary: IRDye800CW Goat Anti-Rabbit IgG at
 1/20000 dilution Predicted band size: 27 kD
 Observed band size: 45 kD



Blank control:K562. Primary Antibody (green
 line): Rabbit Anti-ICAM4 antibody (bs-7637R)
 Dilution: 2μg /10⁶ cells; Isotype Control
 Antibody (orange line): Rabbit IgG . Secondary
 Antibody : Goat anti-rabbit IgG-PE Dilution: 1μg
 /test. Protocol The cells were incubated in
 5%BSA to block non-specific protein-protein
 interactions for 30 min at room temperature
 .Cells stained with Primary Antibody for 30 min
 at room temperature. The secondary antibody
 used for 40 min at room temperature.
 Acquisition of 20,000 events was performed.



Blank control:K562. Primary Antibody (green
 line): Rabbit Anti-ICAM4 antibody (bs-7637R)
 Dilution: 2μg /10⁶ cells; Isotype Control
 Antibody (orange line): Rabbit IgG . Secondary
 Antibody : Goat anti-rabbit IgG-PE Dilution: 1μg
 /test. Protocol The cells were incubated in
 5%BSA to block non-specific protein-protein
 interactions for 30 min at room temperature
 .Cells stained with Primary Antibody for 30 min
 at room temperature. The secondary antibody

Important Note: This product as supplied is intended for research use only, not for use in human, therapeutic or diagnostic applications.

used for 40 min at room temperature.
Acquisition of 20,000 events was performed.

— SELECTED CITATIONS —

- **[IF=3.23]** Polin, Helene, et al. "Compound heterozygosity of two novel RHAG alleles leads to a considerable disruption of the Rh complex." Transfusion 56.4 (2016): 950-955. FCM ;="Human". 27079312