

MPXV/E8L Rabbit pAb

Catalog Number: bs-43537R

Target Protein: MPXV/E8L

Concentration: 1mg/ml

Form: Liquid

Host: Rabbit

Clonality: Polyclonal

Isotype: IgG

Applications: ELISA (1:5000-10000)

Reactivity: Monkey (predicted:MPXV)

Predicted MW: 35 kDa

Swiss Prot: Q5IXS0

Source: Recombinant MPXV E8L protein: 1-275/304.

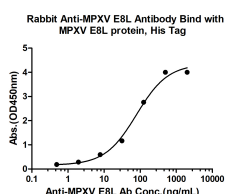
Purification: affinity purified by Protein A

Storage: 0.01M TBS (pH7.4) with 1% BSA, 0.02% Proclin300 and 50% Glycerol.

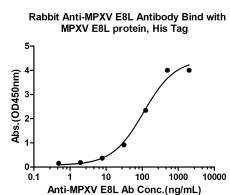
Shipped at 4°C. Store at -20°C for one year. Avoid repeated freeze/thaw cycles.

Background: Monkeypox is a rare zoonosis caused by monkeypox virus, which has become the most serious orthopoxvirus and consists of complex double stranded DNA. The cases are mostly in central and western Africa. The pathogenesis of monkeypox is that the virus invades the body from respiratory mucosa, multiplies in lymphocytes, and incurs into blood producing transient venereal toxemia. after the virus multiplies in cells, the cells can invade the blood and propagate to the skin of the whole body, causing lesions.

VALIDATION IMAGES



Measured by its binding ability in an indirect ELISA. Immobilized MPXV E8L protein, His Tag (Cat. bs-43537P) at 2 µg/mL (100 µL/well) can bind Rabbit Anti-MPXV E8L Antibody, the EC50 is 79.33 ng/mL.



Measured by its binding ability in a indirect ELISA. Immobilized MPXV E8L protein, His Tag (Cat. bs-43537P) at 2 µg/mL (100 µL/well) can bind Rabbit Anti-MPXV E8L Antibody, the EC50 is 109.5 ng/mL.