

bs-25370R**[Primary Antibody]****ANGPTL3 Rabbit pAb****Bioss**
ANTIBODIES

www.bioss.com.cn

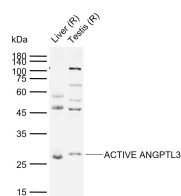
sales@bioss.com.cn

techsupport@bioss.com.cn

400-901-9800

— DATASHEET —

Host: Rabbit Clonality: Polyclonal GeneID: 27329 Target: ANGPTL3 Immunogen: KLH conjugated synthetic peptide derived from human ANGPTL3: 1-100/460. Purification: affinity purified by Protein A Concentration: 1mg/ml Storage: 0.01M TBS (pH7.4) with 1% BSA, 0.02% Proclin300 and 50% Glycerol. Shipped at 4°C. Store at -20°C for one year. Avoid repeated freeze/thaw cycles. Background: Angiopoietin-like protein 3 (Angptl3) functions as a potent lipoprotein lipase inhibitor and is an important component of plasma triglyceride homeostasis. Angptl3 also plays a role in adipose formation and angiogenesis through its interaction with integrin α v β 3. It is secreted by the liver and is functionally defined by the C-terminal fibrinogen (FBN)-like domain and an N-terminal coiled-coil domain. Angptl3 regulates circulating triglyceride levels during different nutritional states thereby mediating the feeding/fasting cycle. A deficiency of Angptl3 results in abnormally low lipid levels, and a repression of the protein may be protective against atherosclerosis. Angptl3 may also play an important role in hyperlipidemia in diabetes.	Isotype: IgG SWISS: Q9Y5C1	Applications: WB (1:500-2000) Reactivity: Rat (predicted: Human, Mouse, Pig, Sheep, Cow, Dog, Horse) Predicted MW.: 49 kDa Subcellular Location: Secreted
--	---	--

— VALIDATION IMAGES —

Sample: Lane 1: Rat Liver tissue lysates Lane 2:
 Rat Testis tissue lysates Primary: Anti-ANGPTL3
 (bs-25370R) at 1/1000 dilution Secondary:
 IRDye800CW Goat Anti-Rabbit IgG at 1/20000
 dilution Predicted band size: 49 kDa Observed
 band size: 27 kDa